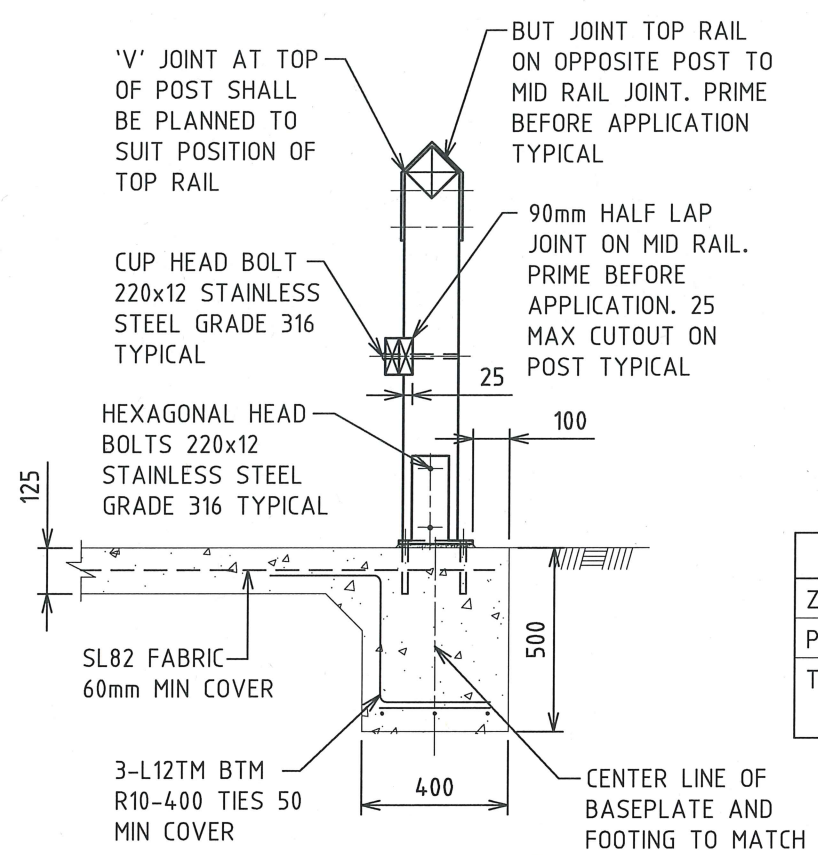


TYPICAL ELEVATION
SCALE 1:20

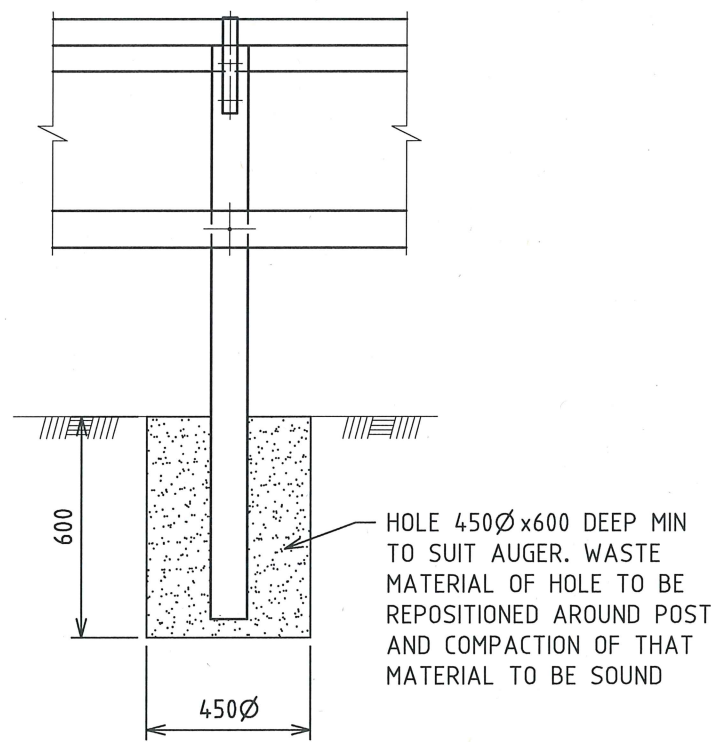


TYPICAL CROSS SECTION
SCALE 1:20

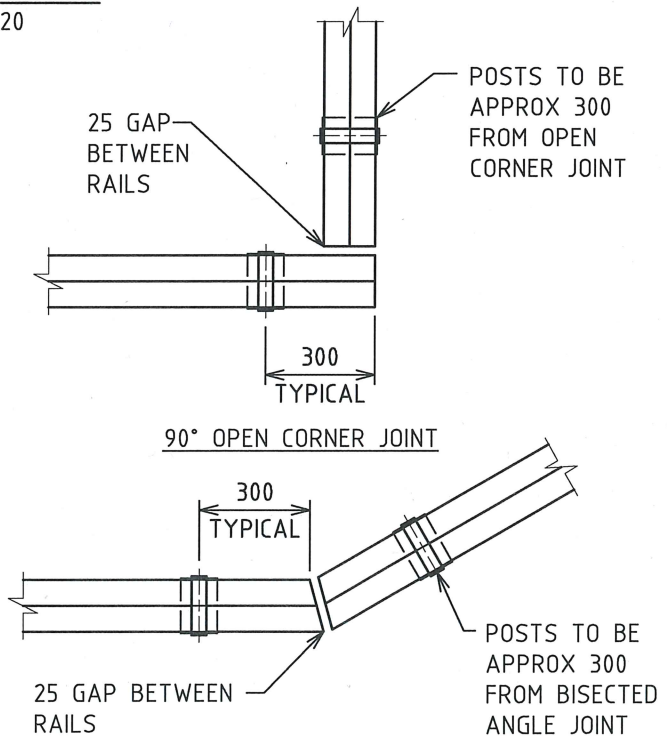
NOTES

1. ALL TIMBER TO BE ORDERED AT 5.4m LENGTHS MAKING CENTERS OF POSTS APPROXIMATELY 2.5m APART FOR STANDARD APPLICATIONS
2. WHEN TIME PERMITS, CLASS 1 TIMBER IS PREFERRED BUT IF SCHEDULING TIME DOES NOT PERMIT THEN CLASS 2 TIMBER IS ACCEPTABLE FOR STANDARD APPLICATIONS.
3. ALL TIMBER TO HAVE 10mm CHAMFERS INCLUDING OPEN ENDS
4. FENCE TO BE INSTALLED GREATER THAN 1000mm AWAY FROM THE EDGE OF A SHARED PATH OTHERWISE REFER TO SHEET 2 FOR ORDINANCE FENCE SHARED PATHWAY PARTIAL BARRIER FENCE.

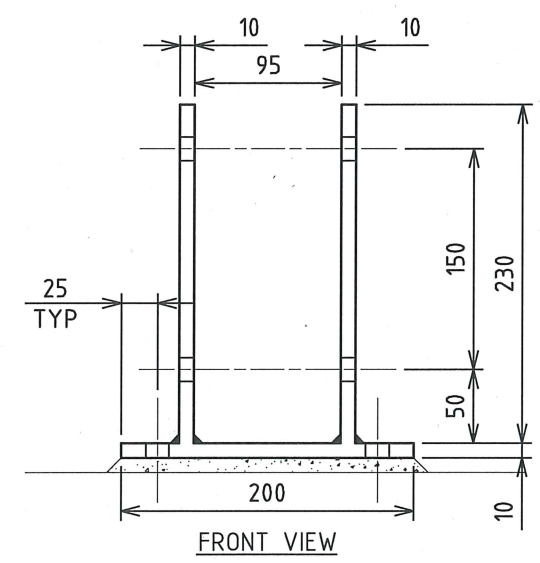
ITEM	SPECIFICATIONS (FOR COSTAL RADIUS)
ZINSSER	SEALER FOR POROUS AT UNPRIMED SURFACE
PRIMER	1 COAT TOTAL PREPARATION
TOP COAT	2 COATS SOLARGUARD WEATHERSHIELD, AQUA ENAMEL OR EQUIVALENT



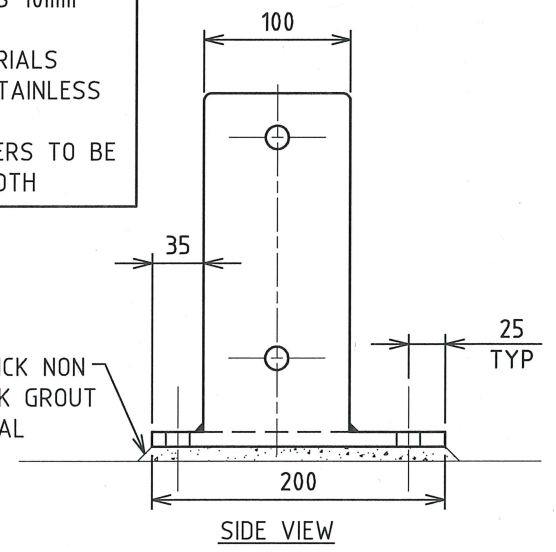
TYPICAL INGROUND INSTALLATION
SCALE 1:20



TYPICAL JOINT DETAILS
SCALE 1:20



- BASEPLATE NOTES**
1. ALL HOLES 18Ø
 2. ALL WELDS 10mm FILLETS
 3. ALL MATERIALS GRADE 316 STAINLESS STEEL.
 4. ALL CORNERS TO BE GROUND SMOOTH



BASEPLATE DETAILS
SCALE 1:5

No.	AMENDMENT DETAILS	DATE	INITIALS
2	GENERAL REVISION	18.08.15	T.A.
1	CONSTRUCTION	18.12.14	T.A.
0	PRELIMINARY	18.11.14	T.A.

SCALE
AS SHOWN

COORDINATE SYSTEM: HEIGHT DATUM: AHD

LIVEABLE CITY
The City of Newcastle
INFRASTRUCTURE MANAGEMENT SERVICES

REVIEWED: J.C.

APPROVED:

SIGNED: *[Signature]*
INFRASTRUCTURE MANAGEMENT SERVICES MANAGER

DATE: 21/8/15

THE CITY OF NEWCASTLE

**FENCES
ORDINANCE FENCE**

NCC PLAN No.
A3500

AMENDMENT No.

SHEET No.
1
OF
1
SHEETS