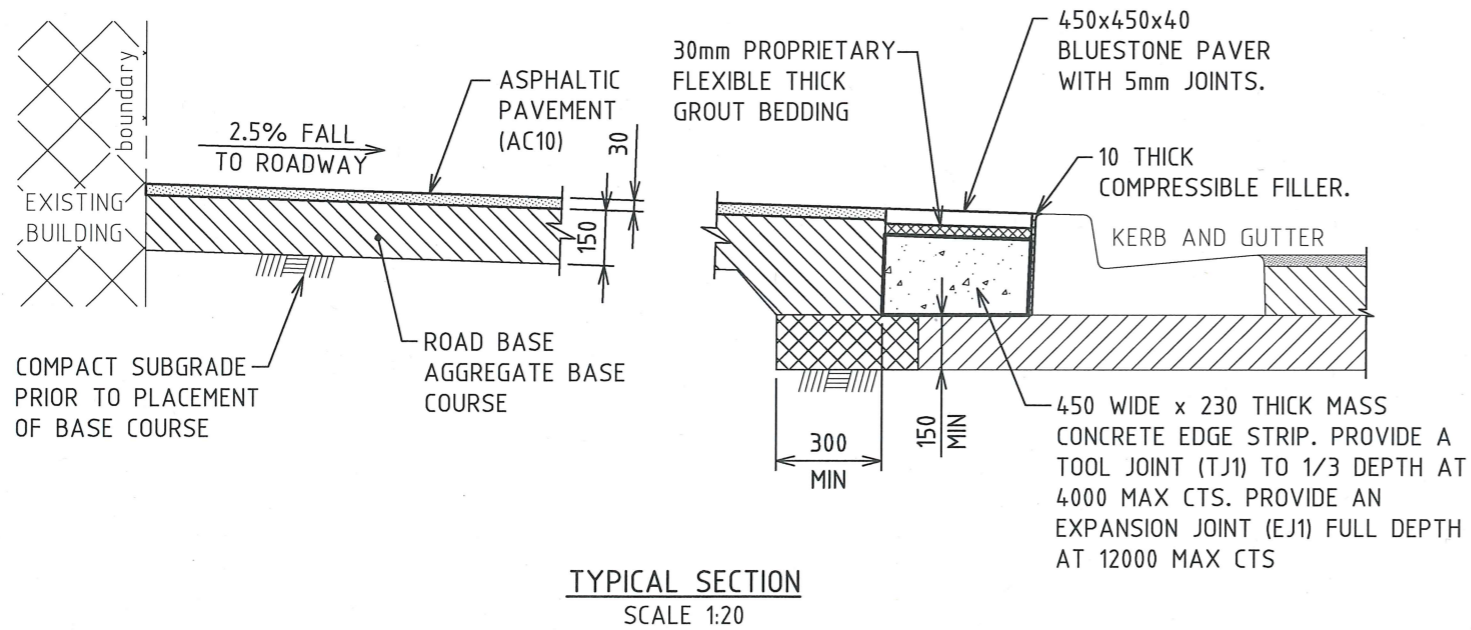


TYPICAL FOOTWAY PAVING ASPHALTIC CONCRETE PLAN - PAVER BANDING  
 SCALE 1:50  
 PAVEMENT TYPE 5 IN THE CITY CENTRE PUBLIC DOMAIN TECHNICAL MANUAL

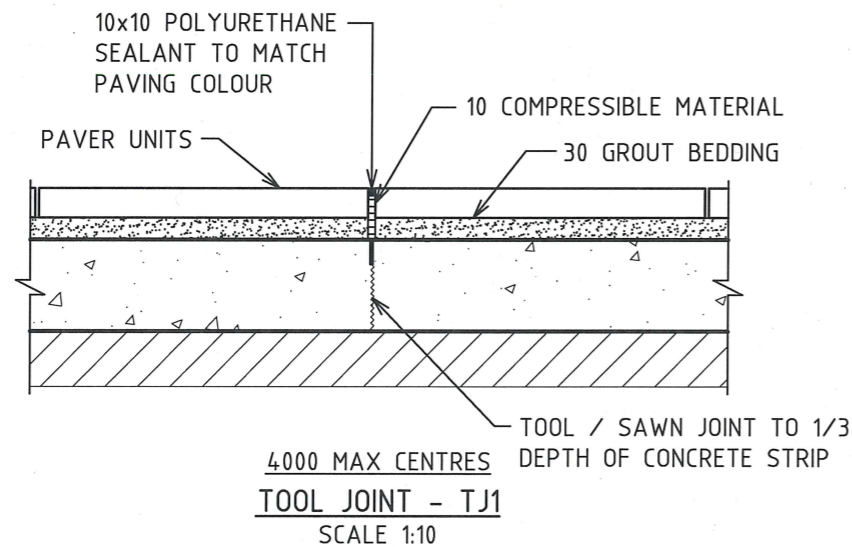
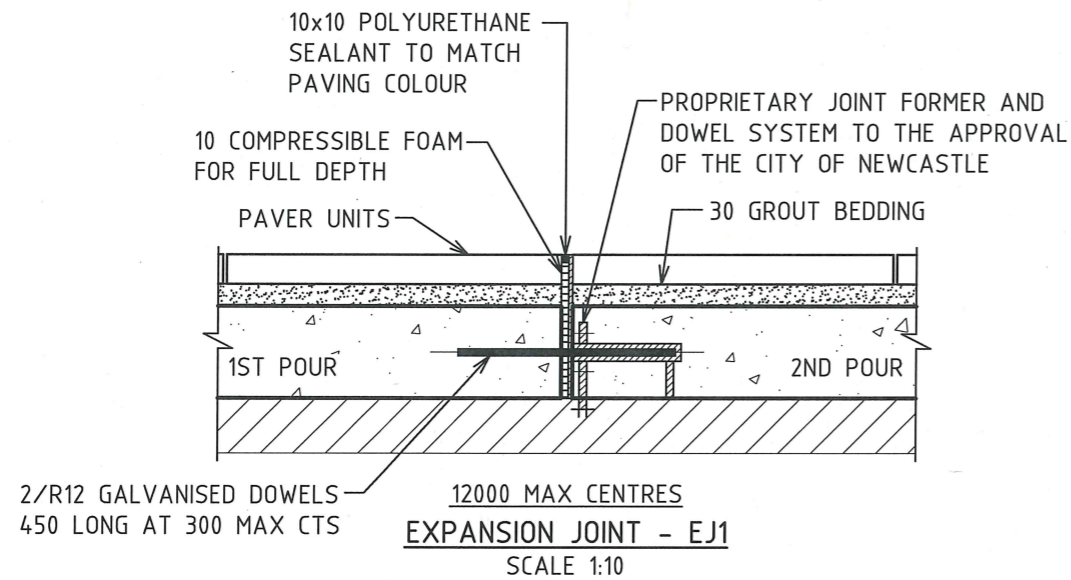


TYPICAL SECTION  
 SCALE 1:20

AC7 - TO BE USED IN HIGH PEDESTRIAN ACTIVITY AREAS. (EG. COMMERCIAL AREAS, SCHOOLS, OUTDOOR DINING)  
 AC10 - TO BE USED IN LOW PEDESTRIAN ACTIVITY AREAS. (EG. RESIDENTIAL AREAS)


0 CONSTRUCTION 18.08.15 T.A. No. AMENDMENT DETAILS DATE INITIALS			SCALE AS SHOWN	LIVEABLE CITY INFRASTRUCTURE MANAGEMENT SERVICES	APPROVED:  SIGNED: ..... INFRASTRUCTURE MANAGEMENT SERVICES MANAGER DATE: 25/8/15	THE CITY OF NEWCASTLE FOOTWAY PAVING ASPHALTIC CONCRETE WITH PAVER BANDING	NCC PLAN No. <b>A1410</b>	SHEET No. 1 OF 2
A3 ORIGINAL THIS SHEET WAS PREPARED IN COLOUR AND WILL BE INCOMPLETE IF COPIED			COORDINATE SYSTEM:	HEIGHT DATUM: AHD	REVIEWED: J.C.	AMENDMENT No.	SHEETS	





**NOTES**

1. ALL WORKMANSHIP AND MATERIAL SHALL COMPLY WITH THE CURRENT AUSTRALIAN STANDARDS IN PARTICULAR AS3600 AND AS3727, AS2150 & AS2734 AS WELL AS ANY REQUIREMENTS OF THE RELEVANT AUTHORITIES.
2. PAVEMENT IS TO BE FOUNDED ON FIRM NATURAL CUT GROUND OR COMPACTED FILL. ANY SOFT AREAS ARE TO BE REMOVED AND REPLACED WITH COMPACTED FILL TO MEET A MINIMUM OF 100KPa ALLOWABLE BEARING PRESSURE.
3. ANY FILL MUST BE PLACED IN 150mm THICK MAXIMUM LAYERS AND COMPACTED TO A RELATIVE DRY DENSITY OF 98% TO AS1289.5.1.1.
4. THE BASE COURSE IS TO BE APPROVED GRANULAR GRADED MATERIAL (SUCH AS FINE CRUSHED ROCK) COMPACTED TO A MINIMUM DRY DENSITY RATIO OF 98% WHEN TESTED ACCORDING TO AS1289.E2.1. (MODIFIED COMPACTIVE EFFORT)
5. THE SURFACE OF THE BASE COURSE PRIOR TO LAYING ASPHALT SHOULD BE FIRM AND FREE OF SURFACE WATER OR LOOSE MATERIAL AND DUST. IMMEDIATELY PRIOR TO PLACING ASPHALT, THE SURFACE OF THE BASE COURSE SHOULD BE TACK COATED WITH A BITUMINOUS EMULSION SPRAY IN ACCORDANCE WITH AS2734
6. PATHS GENERALLY TO BE DESIGNED TO HAVE A 2.5% CROSS FALL. POORLY DRAINED SITES MAY REQUIRE SUB SURFACE DRAINAGE TO PROTECT THE FOOTWAY PAVEMENT.
7. THE FINISHED LEVEL OF ANY PAVEMENT ABUTTING A WALL MUST BE BELOW THE DAMP PROOF COURSE AND MUST NOT OBSCURE ANY WEEP HOLES OR DRAINAGE OPENINGS.
8. ASPHALT SHALL BE MANUFACTURED, LAID AND COMPACTED IN ACCORDANCE WITH AS2150 AND AS2734. MIX SHALL BE AC7 HAVING NOMINAL MAXIMUM SIZE AGGREGATES OF 10mm AND 7mm (RESPECTIVELY AND HAVE MIX PROPORTIONS THAT CONFORM TO THOSE GIVEN IN THE AS2734. CLASS AR450 BITUMEN SHOULD BE SELECTED FOR THE BINDER.
9. THE ASPHALT PAVEMENT SHALL BE COMPACTED WHILE HOT (ABOVE 140 DEGREE CELSIUS). TO ACHIEVE A DENSE, SMOOTH SURFACE FREE OF ROLLER MARKS OR LOOSE MATERIAL. EXCEPT IN INACCESSIBLE AREAS WHERE VIBRATORY PLATES AND HAND TAMPERS ARE PERMISSIBLE, THE COMPACTION SHOULD BE MECHANIZED ROLLERS.
10. FINISHED SURFACE LEVELS SHALL BE WITHIN 10mm OF THE SPECIFIED LEVEL AT ANY POINT, AND THE SURFACE ON THE PLANE SECTION SHOULD NOT DEVIATE BY MORE THAN 10mm FROM THE BOTTOM OF A 3m LONG STRAIGHT EDGE LAID IN ANY DIRECTION.
11. THE MINIMUM SITE DENSITY OF THE COMPACTED MIX SHOULD BE 95% OF THE 50 BLOW MARSHALL DENSITY OF THE LABORATORY COMPACTED MIX AS SPECIFIED IN AS2150.

				SCALE AS SHOWN	 LIVEABLE CITY INFRASTRUCTURE MANAGEMENT SERVICES	APPROVED: <i>[Signature]</i>	<b>THE CITY OF NEWCASTLE</b> <b>FOOTWAY PAVING ASPHALTIC CONCRETE          WITH PAVER BANDING</b>	NCC PLAN No. <b>A1410</b>	SHEET No. 2 OF 2
0	CONSTRUCTION	18.08.15	T.A.	REVIEWED: J.C.		SIGNED: <i>[Signature]</i> INFRASTRUCTURE MANAGEMENT SERVICES MANAGER		AMENDMENT No.	SHEETS
No.	AMENDMENT DETAILS	DATE	INITIALS	COORDINATE SYSTEM:	HEIGHT DATUM: AHD	DATE: 24/8/15			
A3 ORIGINAL THIS SHEET WAS PREPARED IN COLOUR AND WILL BE INCOMPLETE IF COPIED									