

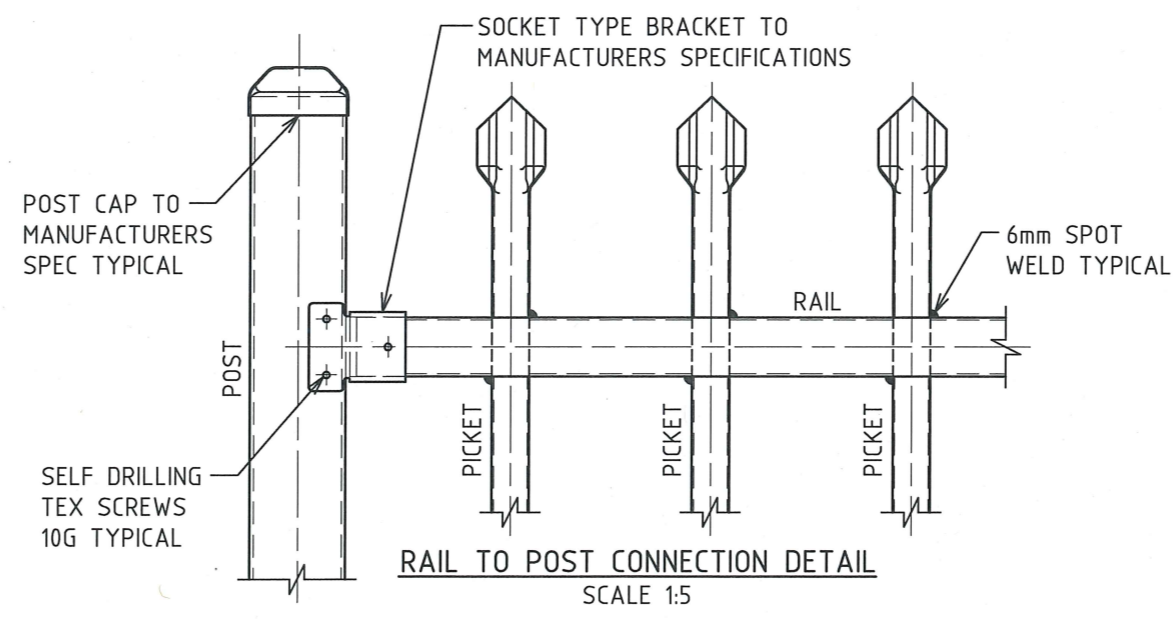
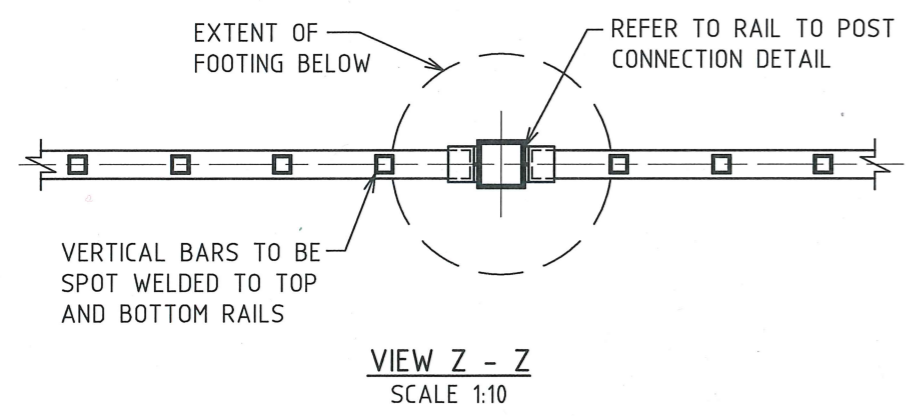
NOTES

GENERAL NOTES

- GATE, END AND INTERMEDIATE POSTS TO BE 65x65 SHS GALVANISED TO AS1163
- FENCE PANEL RAILS TO BE 40x40x1.6 SHS GALVANISED TO AS1163
- FENCE PANEL VERTICAL BARS TO BE 16x16x1.2 SHS OR 16Øx1.2 CHS GALVANISED TO AS1163
- PANELS TO BE FIXED TO POSTS USING MANUFACTURER SUPPLIED SOCKET CONNECTORS OR 35x35x2.0 GALVANISED MILD STEEL 'L' BRACKETS. BOTH CONNECTIONS TO BE ATTACHED WITH GALVANISED 12-14x20mm HEXAGON HEAD SELF DRILLING TEX SCREWS
- VERTICAL BARS TO PASS THROUGH TOP AND BOTTOM RAILS AND SECURED TO RAIL WITH 6mm SPOT WELD. SHS TO PASS THROUGH AT 45° ANGLE.
- ALL WELDS TO BE SILICONE BRONZE WELDS (NOT MILD STEEL WHEEL WELDS) TO SUIT THE PROTECTIVE FINISH SPECIFIED.
- ALL STEEL ELEMENTS ARE TO BE HOT DIP GALVANISED TO PROVIDE A MINIMUM ZINC RATING OF 2275. FERROUS OPEN SECTIONS TO AS4791, FERROUS HOLLOW SECTIONS TO AS4792.
- ALL STEEL ELEMENTS TO BE POWDER COATED BLACK (UV STABILIZED) TO AS4506. THE ATMOSPHERIC CLASSIFICATION IN ACCORDANCE WITH TABLE 2.1 SHALL BE D. HIGH MEMBRANE/INDUSTRIAL
- ALL CONCRETE TO BE GRADE N20
- POSTS ARE TO BE VERTICAL
- STEP TO A MAX OF 150 GAP AT BOTTOM RAKING REQUIRED FOR GRATER GAPS. PANELS ARE AVAILABLE FOR RAKE OF 20°, 25° & 30°
- THESE FENCES ARE INTENDED AS A PEDESTRIAN BARRIER AND ARE NOT TO BE USED IN SITUATIONS WHERE MOTOR VEHICLES REQUIRE RESTRAINT.
- DIMENSIONS ARE IN MILLIMETRES UNLESS NOTED OR DETAILED OTHERWISE

SETOUT NOTES

- WHERE USED FOR PLAYGROUNDS ALL GAPS WITHIN THE FENCE AND TO OBSTACLES ADJOINING THE FENCE AND GATES.
- ENSURE 1200 MIN CLEAR SPAN FROM TOP OF FENCE TO ANY CLIMBABLE OBJECT OUTSIDE THE FENCED AREA THAT MAY PROVIDE A FOOTHOLD ie. ROCKS, STEPS, BANKS OR TREES WITH LOW BRANCHES
- ENSURE 100 MAX GAP BETWEEN END POST AND ABUTTING BARRIER.
- FENCE TO BE INSTALLED GREATER THAN 1000mm AWAY FROM THE EDGE OF A SHARED PATH



0 CONSTRUCTION 18.08.15 T.A. No. AMENDMENT DETAILS DATE INITIALS			SCALE AS SHOWN	LIVEABLE CITY INFRASTRUCTURE MANAGEMENT SERVICES	APPROVED: <i>[Signature]</i> SIGNED: INFRASTRUCTURE MANAGEMENT SERVICES MANAGER DATE: 21/8/15	THE CITY OF NEWCASTLE FENCES SECURITY FENCING	NCC PLAN No. A3508 AMENDMENT No.	SHEET No. 1 OF 1 SHEETS
A3 ORIGINAL THIS SHEET WAS PREPARED IN COLOUR AND WILL BE INCOMPLETE IF COPIED			COORDINATE SYSTEM:	HEIGHT DATUM: AHD	REVIEWED: J.C.			