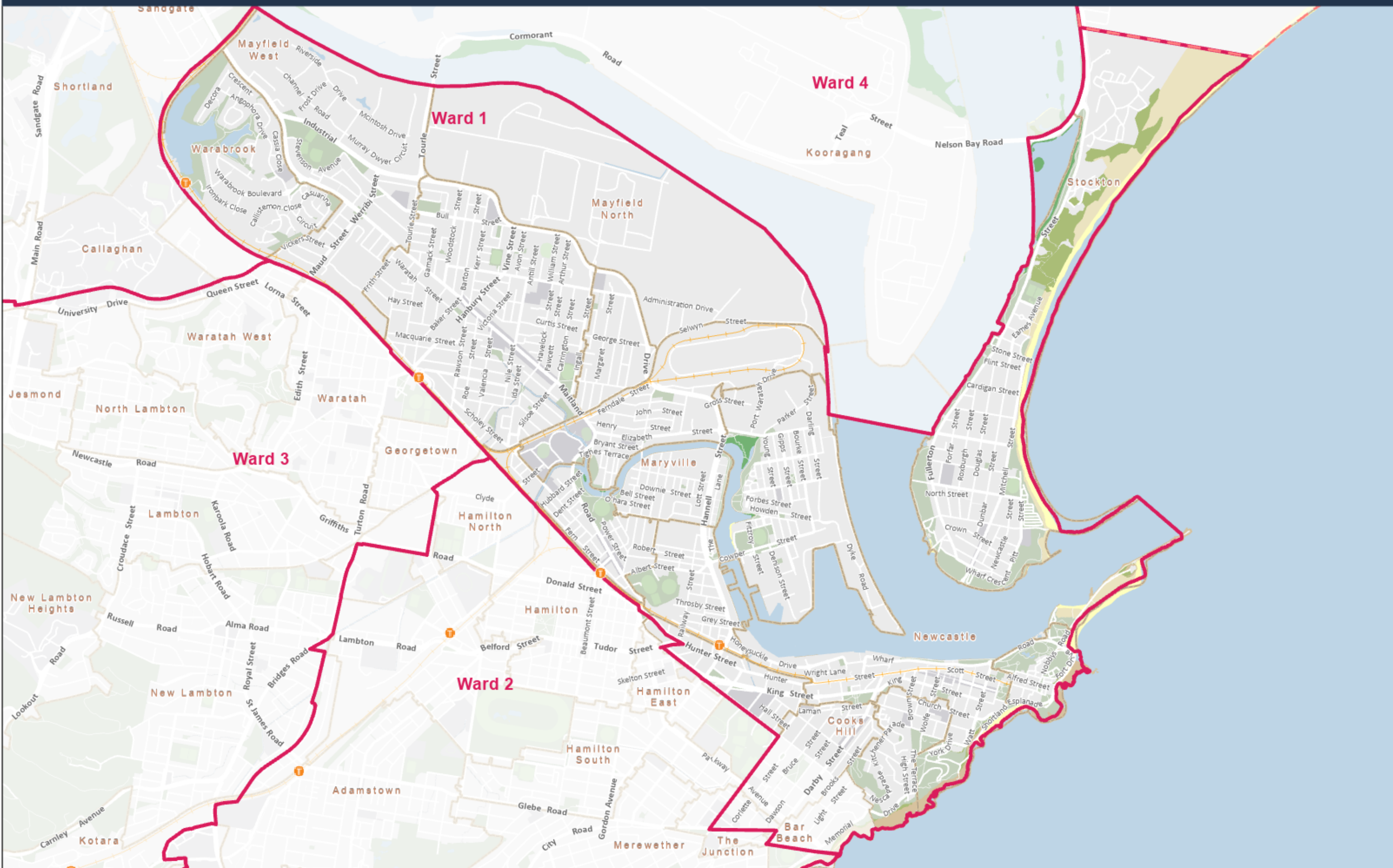


# 2017 Ward 1 Boundaries

Contains Carrington, Cooks Hill, Islington, Maryville, Mayfield, Mayfield East, Mayfield North, Mayfield West, Newcastle, Newcastle East, Stockton, The Hill, Tighes Hill, Warabrook, Wickham and parts of Bar Beach, Newcastle West and The Junction



DISCLAIMER: Although great care has been taken in the preparation of these documents/maps, City of Newcastle makes no representation or warranty as to the accuracy or completeness of any information contained in them. City of Newcastle accepts no responsibility for any misprints, errors, omissions or inaccuracies in these documents/maps or for loss or damages resulting from reliance on any information provided

0 0.25 0.5 1 Kilometres

Scale: 1:30,000 at A3



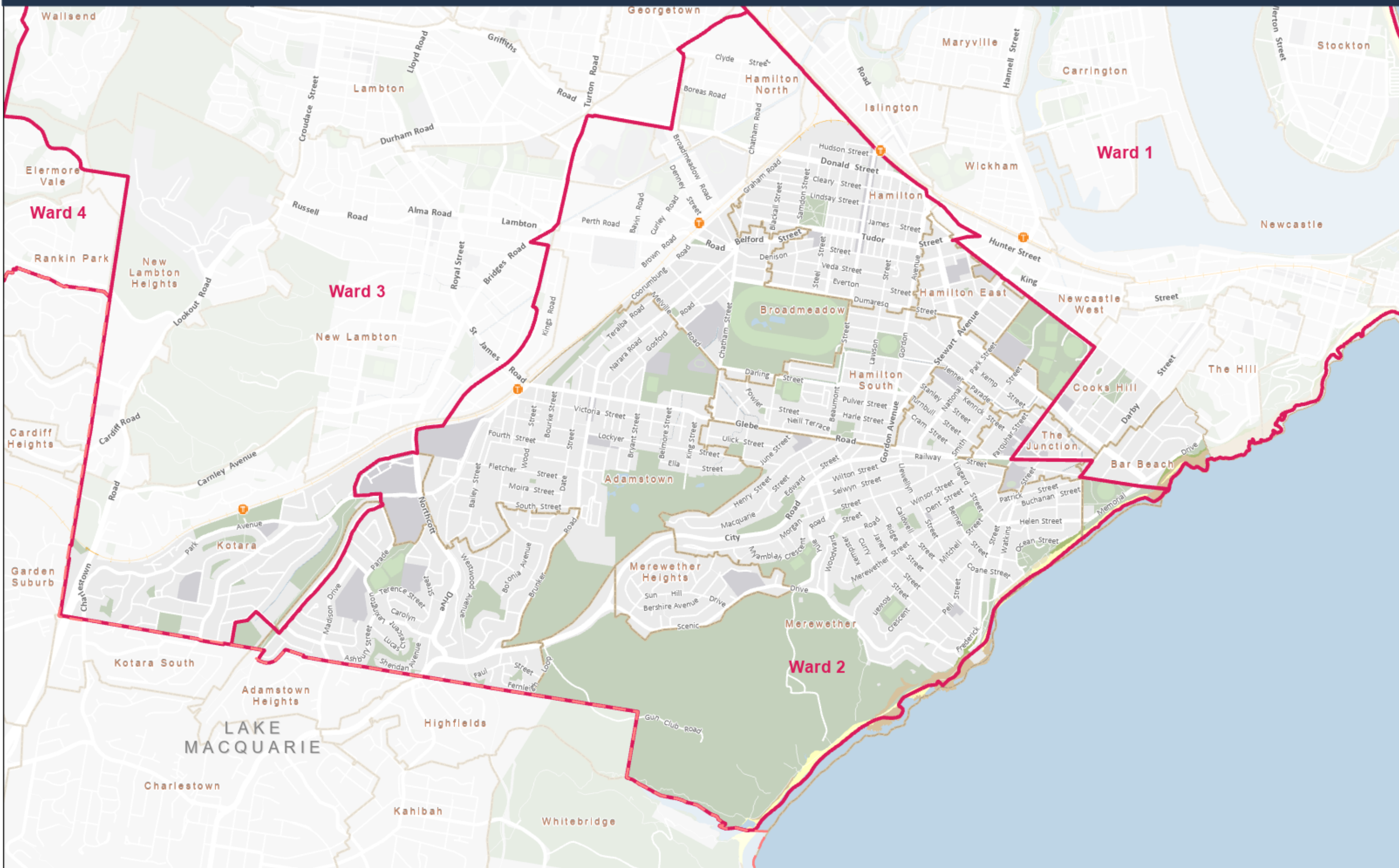


# 2017 Ward 2 Boundaries

Contains Adamstown, Broadmeadow, Hamilton, Hamilton East, Hamilton North, Hamilton South, Merewether, Merewether Heights and parts of New Lambton, Bar Beach, The Junction, Newcastle West, Adamstown Heights and Kotara



City of  
Newcastle



DISCLAIMER: Although great care has been taken in the preparation of these documents/maps, City of Newcastle makes no representation or warranty as to the accuracy or completeness of any information contained in them. City of Newcastle accepts no responsibility for any misprints, errors, omissions or inaccuracies in these documents/maps or for loss or damages resulting from reliance on any information provided

0 0.25 0.5 1  
Kilometres

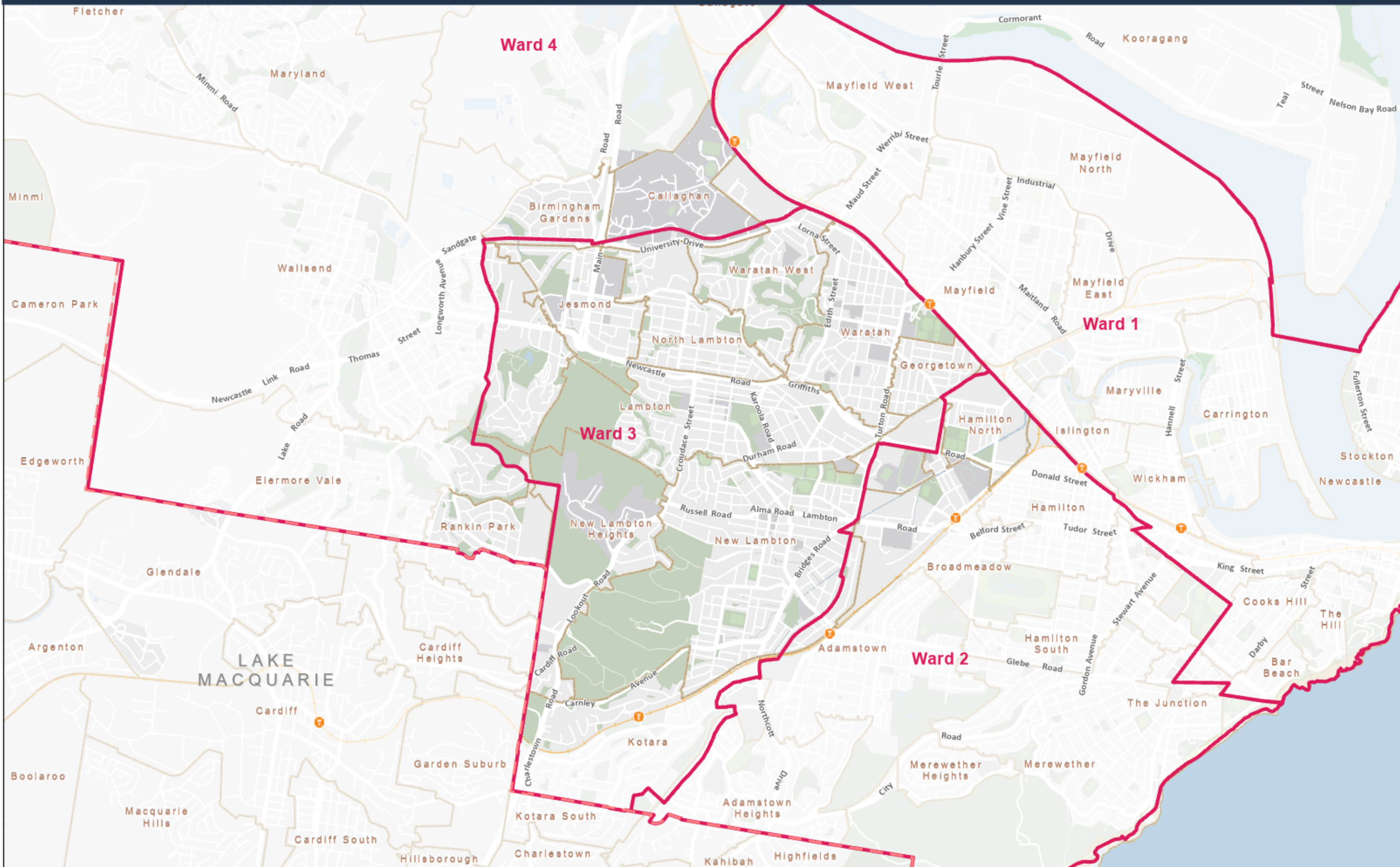
Scale: 1:25,000 at A3





# 2017 Ward 3 Boundaries

Contains Georgetown, Jesmond, Lambton, New Lambton, North Lambton, Waratah and parts of Broadmeadow, Adamstown Heights, Birmingham Gardens, Callaghan, Wallsend, Elernore Vale, New Lambton Heights, Kotara and Waratah West.



DISCLAIMER: Although great care has been taken in the preparation of these documents/maps, City of Newcastle makes no representation or warranty as to the accuracy or completeness of any information contained in them. City of Newcastle accepts no responsibility for any misprints, errors, omissions or inaccuracies in these documents/maps or for loss or damages resulting from reliance on any information provided

0 0.5 1 2 Kilometres

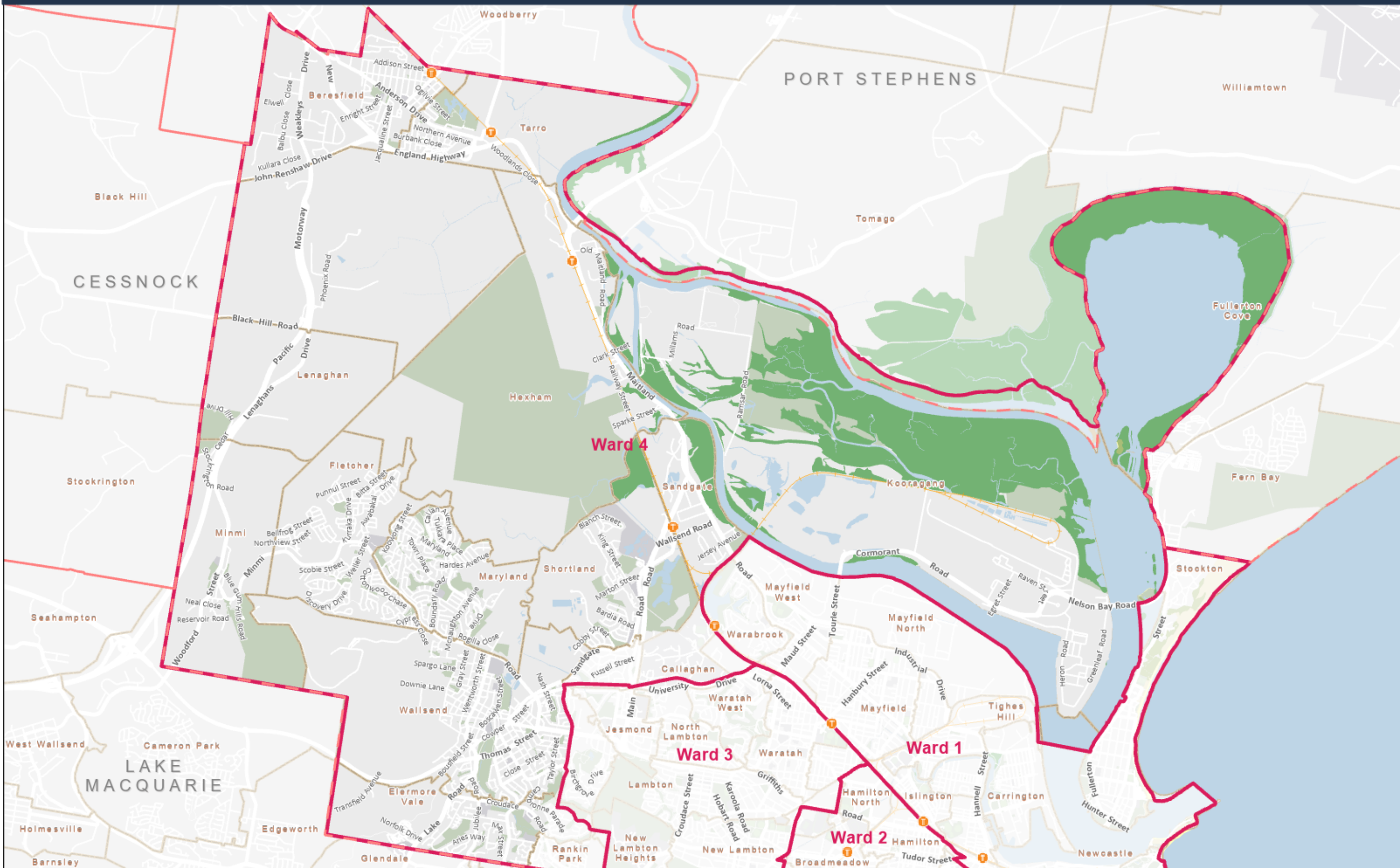
Scale: 1:36,000 at A3





# 2017 Ward 4 Boundaries

Contains Beresfield, Elmore Vale, Fletcher, Hexham, Kooragang, Lenaghan, Maryland, Minmi, Sandgate, Shortland, Tarro and parts of Birmingham Gardens, Callaghan, Waratah West, Wallsend, Rankin Park and Black Hill.



DISCLAIMER: Although great care has been taken in the preparation of these documents/maps, City of Newcastle makes no representation or warranty as to the accuracy or completeness of any information contained in them. City of Newcastle accepts no responsibility for any misprints, errors, omissions or inaccuracies in these documents/maps or for loss or damages resulting from reliance on any information provided

0 0.5 1 2  
Kilometres

Scale: 1:60,000 at A3

