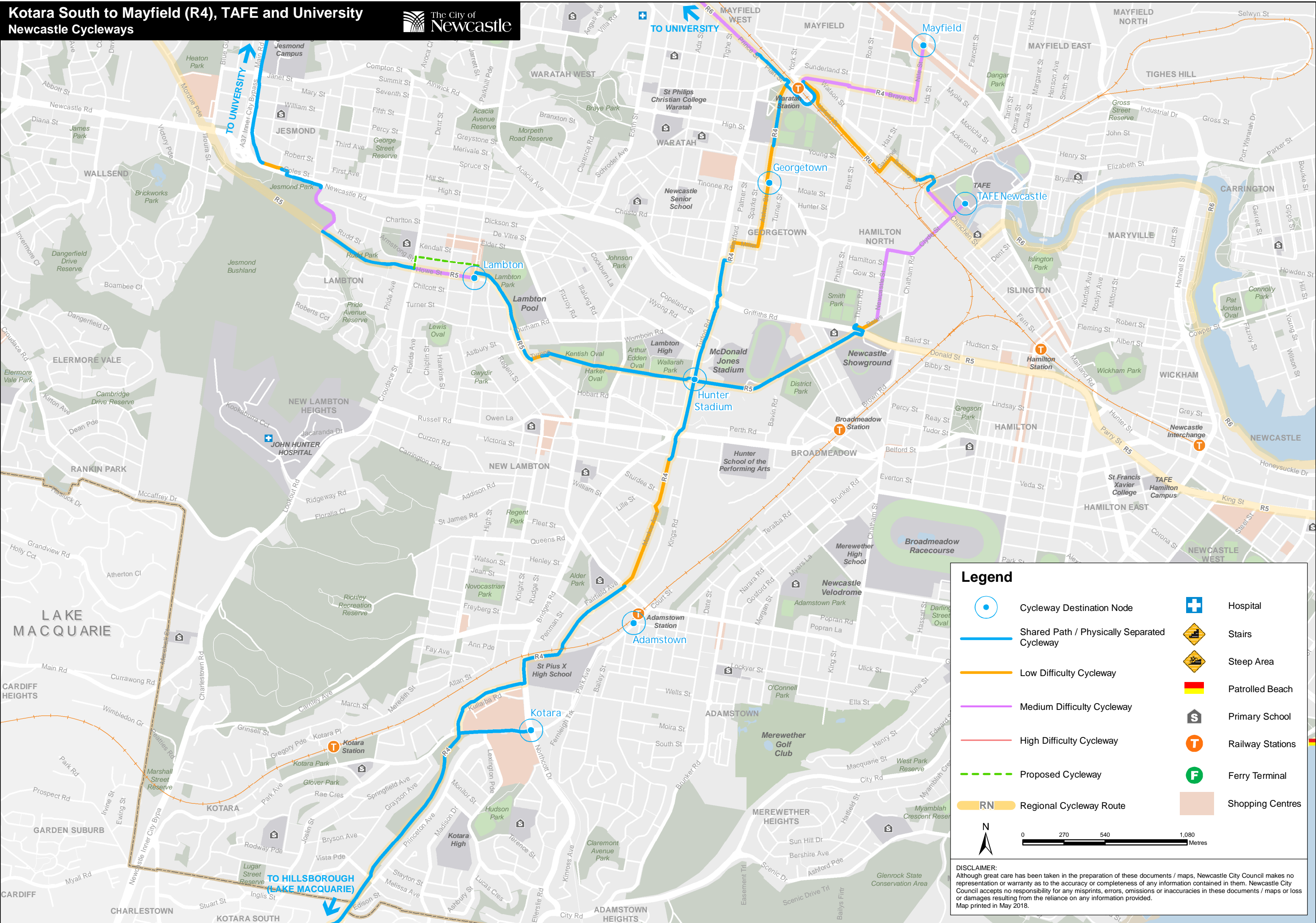


Kotara South to Mayfield (R4), TAFE and University
Newcastle Cycleways



Legend

- | | | | |
|--|---|--|------------------|
| | Cycleway Destination Node | | Hospital |
| | Shared Path / Physically Separated Cycleway | | Stairs |
| | Low Difficulty Cycleway | | Steep Area |
| | Medium Difficulty Cycleway | | Patrolled Beach |
| | High Difficulty Cycleway | | Primary School |
| | Proposed Cycleway | | Railway Stations |
| | Ferry Terminal | | Shopping Centres |
| | Regional Cycleway Route | | |



DISCLAIMER:
Although great care has been taken in the preparation of these documents / maps, Newcastle City Council makes no representation or warranty as to the accuracy or completeness of any information contained in them. Newcastle City Council accepts no responsibility for any misprints, errors, omissions or inaccuracies in these documents / maps or loss or damages resulting from the reliance on any information provided.
Map printed in May 2018.