

Key

- (A) Northern 40km/hr HPAA entry - landscaped kerb extensions or islands with speed cushions
- (B) Existing signalised intersection retained. Kerb ramps re-aligned on Mawson Street
- (C) Speed cushions centrally located within Shortland Local Centre
- (D) Disabled parking space relocated from Hansen Place to achieve appropriate grade
- (E) Landscaped kerb extension or island at entry to Shortland Local Centre - assists pedestrians crossing Hansen Place
- (F) Southern 40km/hr HPAA entry - landscaped kerb extensions or islands and pedestrian refuge - assists pedestrians crossing Sandgate Road

Legend

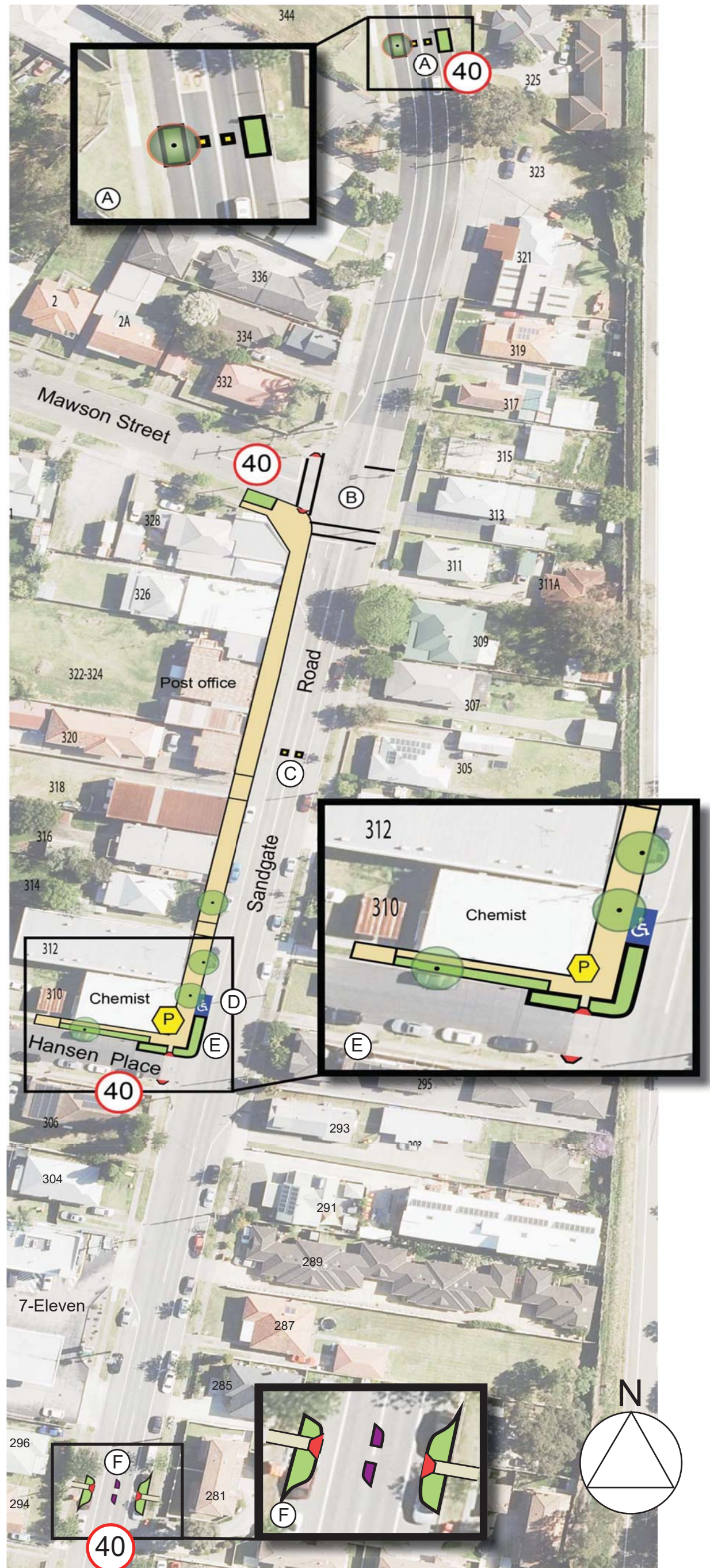
- Proposed entry to 40km/hr High Pedestrian Activity Area (HPAA)
- Proposed set of speed cushions
- Proposed pedestrian refuge
- Relocated disabled parking space
- Upgraded pram ramp
- Upgraded concrete footpath
- Existing tree retained
- Proposed tree
- Proposed landscaping
- Placemaking eg community mural

Notes

Street furniture including bins, seating and bicycle racks will be located in consultation with business owners

All existing parking arrangements are retained unless shown on plan

This plan has been produced for communication purposes at masterplan level and is not a civil design. Final layouts will be subject to a detailed design process and investigation of all service and technical requirements



Shortland Local Centre Public Domain and Traffic Plan

April 2021