



Beresfield and Stockton Public Domain Plans

Consultation Workshop Outcomes
September 2016

September 2016

Prepared by: Corporate Services, Newcastle City Council

Enquiries: engage@ncc.nsw.gov.au or phone 4974 2238

Table of Contents

1	Introduction	1
1.1	Objectives	1
2	Methodology	1
2.1	Workshop	2
2.2	Workshop promotion	2
2.3	Workshop attendance.....	2
2.4	Workshop activities.....	2
2.5	Report presentation	3
3	Beresfield workshop findings	4
3.1	Sticky note issues.....	4
3.2	Map work - Beresfield.....	5
4	Stockton.....	8
4.1	Sticky note issues.....	8
4.2	Map work Stockton	11

List of Tables and Figures

Table 1: Issues raised on sticky notes at Beresfield workshop.....	4
Table 2. Map issues dot voting by theme - Beresfield	6
Table 3. Issues raised on sticky notes at Stockton workshop.....	8
Table 4. Map issues dot voting by theme - Stockton	12
Figure 1 Public Participation Spectrum, International Association of Public Participation	1
Figure 2: Beresfield map work	5
Figure 3 Map activity priority theme voting results - Beresfield.....	6
Figure 4: Stockton map work	11
Figure 5 Map activity priority theme voting results - Stockton.....	11

1 Introduction

Public Domain Plans are being prepared for Beresfield and Stockton town centres in 2016. These plans will inform investment in the public infrastructure of the town centres into the short and medium term. A key component of the development of the two Public Domain Plans is consultation with key users of the two town centres and the general public.

This report provides an overview of the process and key findings of the first stage of public consultation to inform the development of two draft domain plans.

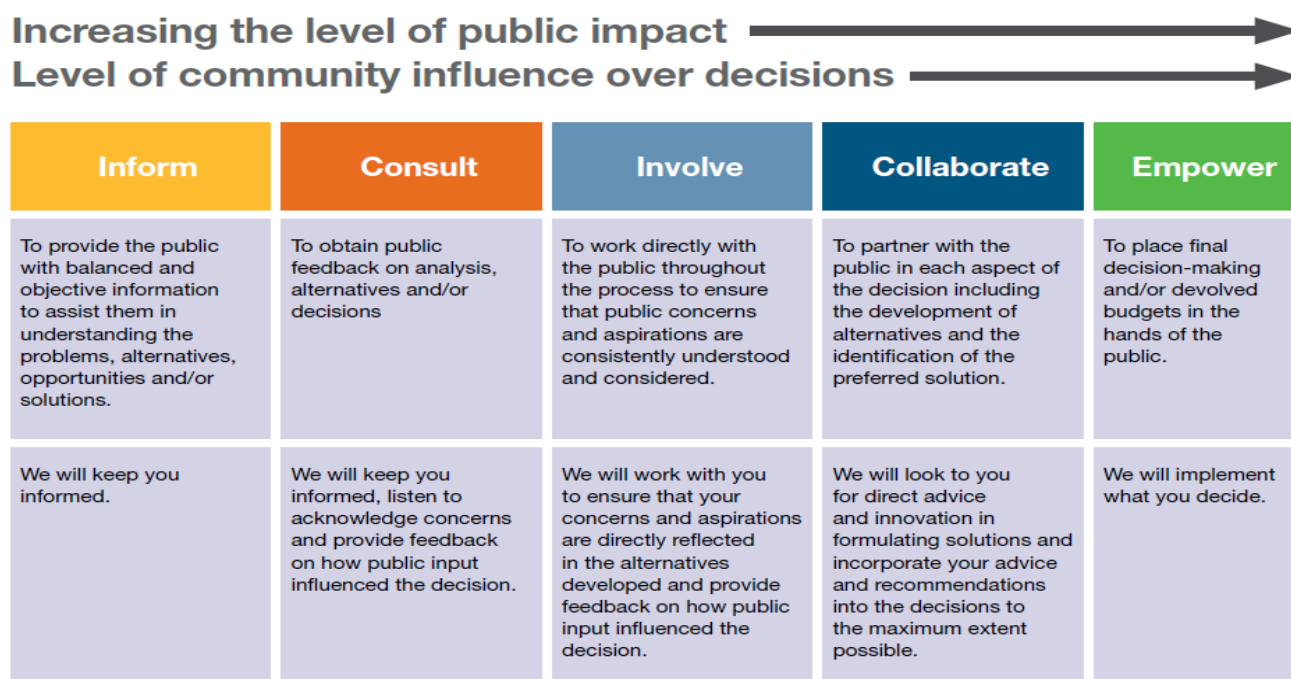
1.1 Objectives

The engagement process aims to capture what the stakeholders' value within the areas and what things they would like to see improved or changed, so that these can be considered in the development of the draft public domain plans. These draft public domain plans will be placed on public exhibition for formal review when prepared.

2 Methodology

It was determined that a workshop would be the best way to capture what aspects of the town centres the community currently enjoy and would like to see retained; and how they would like to see change in the future. These workshops fall under the consult category of the IAP2 framework endorsed in Council's Community Engagement Framework.

Figure 1 Public Participation Spectrum, International Association of Public Participation



2.1 Workshop

There was one workshop held in Beresfield and one in Stockton. These were:

Beresfield

Monday 19 September 2016
Beresfield Primary School

Stockton

Wednesday 21 September 2016
Stockton RSL

2.2 Workshop promotion

The invitation to participants in the community workshops were promoted via the following channels:

- Signage (coreflutes) in the town centre of both suburbs
- Distribution of postcard in local shops, service centres and library
- Enews
- Advertised in local newspapers
- Flyers and information handed out at Wallsend fair

Registration was required either by phone or by a website form.

2.3 Workshop attendance

Attendance at the workshops was:

- Beresfield - 20 people
- Stockton - 24 people

2.4 Workshop activities

There were two distinct activities undertaken in the workshops. These were:

1. Sticky wall

Participants were given six sheets of two different coloured (three pink and three yellow) large sticky note paper. On one colour, participants were asked to indicate in five words or less what they currently like most about their town centre. On the other coloured sheets, participants were asked to describe what 'issues' they would like to see addressed. These sheets were then placed on a 'sticky wall' for all participants to see.

2. Map work

Six tables were set up, each with a large (AO size) aerial photograph of the town centre and markers. Each table was allocated a theme and had a set of images of potential items/ ideas as visual reference bank to guide or prompt discussions around the allocated theme.

The six primary themes of the workshops reflect the major elements of the proposed domain plans. These were:

- Traffic
- Access and Use
- Parking

- Trees and Plantings
- Aesthetics
- Drainage

Participants were asked to write on the map their ideas and issues associated with each of the themes. After five minutes participants were asked to move to another table, this happened a number of times until all participants had had the opportunity to write their ideas on each theme's aerial photograph.

Finally each participant was given three green and three red sticky dots, and asked to use these to priorities what they felt were the most important theme (green) and the most important idea/issue (red). They could put all their dots on one item or spread them across multiple items.

2.5 Report presentation

The results in this report are presented by workshop. The workshop report should be read in conjunction with viewing the original workshop maps. These have been provided to the team preparing the draft domain plans.

3 Beresfield workshop findings

3.1 Sticky note issues

Table 1 below shows an edited and condensed list of the items and issues that were written on the sticky notes at the Beresfield workshop. The green shading indicates the items or issues that were raised by more than one person. The darker the shade of green the more people raised it.

Table 1: Issues raised on sticky notes at Beresfield workshop

What I like	
Shops and services are central and meet basic community needs	7
Central Location, to Taro, Beresfield, Woodberry	2
Park with open space nearby	2
A Council worker cleans the footpaths	
The police station	
Owls in the trees in the park next to the Anglican church	
What is an issue	
Crime - not safe at night/ need CCTV/	8
Rowdy groups hanging around, especially around the train station	3
Pot hole in streets - not enough maintenance	3
Public toilets are old and unclean	3
Presentation of area, looks un-kept and needs upgrading	2
Upgrade and cleaning up the shops	2
Footpaths - uneven	2
Install lights in park, especially near toilet block	2
Park upgrade - make kid friendly and mow more	2
Need police in station all the time as it take too long for them to come from Maitland, especially at night	2
Centralised shops	
Better Woolworth with full range	
Improve lighting around shopping centre	
Need more banks	
Police - going high speeds down Lawson Avenue	
Better safe parking in shopping area	
Parking - one hour	
Need pedestrian crossing or speed control in Newton Street next to supermarket	
Crossing	
No trees under line	
No trees over 3 metres	
Have all the trees in streets removed	
Some of the trees need trimming	
Clean up the streets	
Realign Beresford Avenue/Lawson Avenue/Newton Street Intersection to	

make safer	
Fix Beresford Avenue, Landor Street, Addison Street, intersection with Lawson Street. The same as Kendall Street. Lawson St intersection has already been fixed.	
Driving Safety - coming out of Addison to turn right over rail bridge, can't see what is coming from over the Lawson Ave rail bridge. A big mirror? For both directions.	
Can anything be done about unused commercial space? Can Council encourage redevelopment or reuse of space?	
Need a bus to get to Thornton, as too hard for people with disabilities to get up the hill from Thornton Train station to Thornton shops	
Bus stop outside Greater Bank - the seat is not close enough to the marked Bus Stop for elderly/disabled people to get to the stop in time (as the bus only stops if/when people are standing at the stop. This forces people to stand in the rain etc.	
Council to sell land to BBC so we can improve 2322 Men's Shed	
Radio and mobile cell tower - impacts views and radiation (EMR) bathes everyone within 500m, linked to cancer/leukaemia (op high school and visible when in the plan area	

3.2 Map work - Beresfield

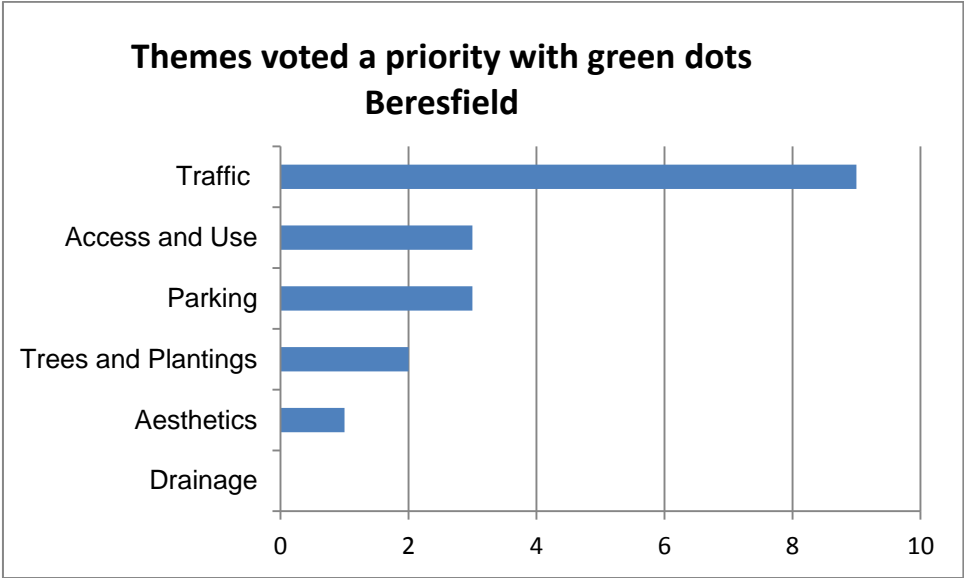
Six aerial photo maps were used in the workshop for people to spatial locate their issues and ideas relating to each of the major project themes. An example is provided in figure 2.

Figure 2: Beresfield map work



Figure 3 shows how many green dot votes each theme map received. That is how many people used their green dots to indicate that they felt the theme was a major priority. It should be noted that some people used their green dots to vote on specific issues or ideas within a theme. These have not been counted in figure 3.

Figure 3 Map activity priority theme voting results - Beresfield



The Table 2 below show all the issues and items that received either green or red dot votes on each of the six themed maps. Where participants used their green dot to 'vote' for an issue or idea rather than a theme these have been included in the tables below.

Table 2. Map issues dot voting by theme - Beresfield

Traffic	Green dots	Red dots
Cars speed and don't stop for pedestrian crossing on Lawson Street		4
Corner of Newton, Additon and Beresford street -difficult to cross, illegal turning, difficult crossing		3
Intersection of Additon St and Lawson St - vision of the railway bridge - need to install a large mirror		3
Corner of Lawson Street, Oglivie Street and Landor St - car park too close to corner and block view, and car turn too fast around the corner from Lawson into Landor Street		3
Difficult crossing on Newton Street between take away and Food for Less		2
Slow cars on Lawson street	2	
Parking	Green dots	Red dots
Railway car park -Vehicle burn out area, lighting, vandalism		1
Crn Lawson and Landor Street		1
Lawson Street - new apartments - not enough parking spots		1

Access and Use	Green dots	Red dots
Keep and improve park and toilet block	3	1
Railway car park	1	1
Cycle way over railway bridge		1
Corner of Newton, Lawson and Beresford street -difficult to cross		1
Trees and Plantings	Green dots	Red dots
Remove large tree on corner of Newton and Ruskin Street		2
Dangerous trees near toilet block in park		1
Trees with owls in park	2	
Aesthetics	Green dots	Red dots
Toilet cleaning and painting		2
Add lights and fake CCTV in park to reduce vandalism	1	
Drainage	Green dots	Red dots
Drainage in Tarro Reserve	4	

The results indicate that:

- Traffic issues are of most concern to the Beresfield community. A range of traffic safety issues were identified, especially visibility at specific intersections, speeding vehicles and difficulty for pedestrians to cross the road.
- Pedestrian crossing and footpath safety was an issue raised across a number of themes. For example pedestrian crossing was noted as an issue on the Access and Use map, the Traffic map and also on the Trees and Planting map (the reason given for wanting to remove the large tree on the corner of Newton and Ruskin Street was that it was a hazard for pedestrians).
- Access and Use were the next most voted for issues. A diverse range of issues were identified on this map. The most voted ones related to improvements in the park and the toilet block in the park.
- The four green dots on the Drainage map related to an area outside of the study area for this project.

4 Stockton

4.1 Sticky note issues

Table 3 below shows an edited and condensed list of the items and issues that were written on the sticky notes at the Stockton workshop. The green shading indicates the items or issues that were raised by more than one person. The darker the shade of green the more people raised it.

Table 3. Issues raised on sticky notes at Stockton workshop

What I Like - (Pink)	
I like the Community atmosphere and spirit. Very friendly	6
Access to city / public transport; access to Ferry system	3
Planting of lower shrubs in some area	3
Like that small business are friendly and keeping the small town feel for residents + visitors	2
Planter boxes in Mitchell St in shopping area beautification	2
Village Atmosphere	2
Interesting views of passing ships	2
Free parking	2
Nice relaxed feel to the Centre	
Discrete town centre does not bleed out to the greater suburb	
Local coffee shop near IGA	
Access to everything, Flat	
The fact the Stockton CBD has access to Newcastle City	
Not to much traffic - pleasantly quiet	
There are no speed humps - I don't believe they are needed	
Level terrain with good street access	
Lots of open area adjacent to harbour	
The centre management has made some improvements to area	
Width of footpath and space for pedestrians to walk	
I love the Stockton Group (Kelly Lofberg interactive) has improved the appearance of Mitchell St	
Good Distribution of litter bins	
A good mix of old and new	
Relatively long history	
Flat area for aged easy walking	
Visitors including international	
Library - how ever improvement would be great	
Mass tree planting down Mitchell St main shopping area	
Nice street furniture	
Improvements to pavement	
Improvements to Building	
Improvements to IGA /etc. Parking area beautification	

What is an issue (Yellow)	
Parking at ferry wharf	8
Flooding in shopping centre /IGA carpark	6
Lack of public toilets in CBD area/ need wheelchair access toilet	6
Need somewhere pleasant to be able to congregate (trees, street furniture and admire views)	5
Footpaths - better alignment, repairs and improved surface	5
Pedestrian crossing - relocate	4
More murals, more colour	4
Need for street trees (planter boxes), especially in Mitchell Street	4
Parking outside the library, can never get never get a park there /need timed parking	4
Traffic	3
Infrastructure	3
Smooth access for walkers/wheelchairs needed and end of each street for road crossing	3
Improve public transport, especially bus services	3
Trees - residents to have a choice of what is planted on the footpath	3
Events/festivals open up more	3
Control of dogs - too many off leash and poo on streets	3
Unattractive streetscape on Mitchell Street CBD, shops need character	3
Lack of street furniture	2
Poor condition and gaps in shopping area	2
Police station - permanent station	2
NBN - need access and faster internet service	2
Lack of gardens on the street	2
Loading dock of IGA is dangerous near school	2
Unattractive street scape	2
Need employee, parking not out side there shop	2
It has no personality	2
Poor cleanliness of footpaths and shopfronts	2
More litter bins around back of shopping centre	
Caution needed when planting trees to make sure they are suitable & don't cause footpath to crack & move later down the track	
No village vibe/presentation for a small town main street	
Lack of a men's shed/women's shed/lions club	
Lack of a range of business	
More speciality shops needed , however locals need to support them	
Lack of natural environment	
Lack of natural	
Improvement to buildings	
Lack a range of shops	
Poor feel to IGA area	

Going through the cigarette smoking area to get to IGA and the café	
No bike parking facilities - or they are limited	
Ferry wharf - what is its future after new Wickham station is finalised	
Overnight camping allow caravan & RV parking during events - New Year's eve, Easter, to occur on ballast grounds	
No slow zone	
Increase parking availability in main shopping centre- remove no parking & relocate bus stop	
Clean gutters regularly so flooding minimised in heavy rain	
Does not take advantage of its coastal location	
Car-pooling is needed to reduce congestion at Ferry terminal	
One way traffic in Mitchell to allow for markets in future	
Flag pole	
CCTV camera	
Reduce Housing commission in area	
Signage is poor, need sign at roundabout to promote CBD	
Tourist information	
Statistical analysis need of parking issues	
Parking where are the 178 park spaces	
Knock down IGA or new buildings	
Something to appeal to ferry visitors	
Library, Stockton open less hours than Port Stephens Library and run by NCC	
Insufficient lighting	
High quality improvements needed not cheap solutions	
The future of Stockton with the advent of the sea level rise, Mitchel St will be lost and other areas	
Remove trees from shopping centre car park (inappropriate type of trees)	
Poor interface between school and shops	
Need 45 degree angle parking	
Parking problems around General Washington Hotel	
Trees need trimming regularly outside Catholic Church and School	

Table 4 below shows all the issues and items that received either green or red dot votes on each of the six themed maps. Where participants used their green dot to 'vote' for an issue or idea rather than a theme, these have been included in the tables below. Where issues were put on a map that related to another theme (e.g. street tree species put on traffic map) these have been moved to the appropriate category if there was one.

Table 4. Map issues dot voting by theme - Stockton

Traffic	Green dots	Red dots
Maintain 2-way traffic in Mitchell Street	2	3
Central line all the way down Mitchell Street	1	2
Angle parking on Crown Street		2
1 way traffic and angle parking		2
No traffic lights		1
Crn King and Mitchell Street is accident hot spot		1
Speed humps		1
One way street for Mitchell Street, angle parking		1
Permanent police station required	3	
Staff car parking	3	
Maintain parallel parking	1	
Ferry car park not big enough	1	
Aesthetics	Green dots	Red dots
Footpaths - useability and aesthetics		3
Trees		1
Infrastructure		1
Attractive street lighting		1
Trees and Plantings	Green dots	Red dots
More trees, more plants		4
Mass tree planting on Mitchell Street, as many as possible		2
Plant appropriate trees e.g. Grevillia Bottees etc.	1	2
Parking	Green dots	Red dots
Ferry Parking - need more	1	5
Cars park too close to corner of Mitchell and King Street and block vision - dangerous		4
Marked/timed parking at Library	4	3

Make one way traffic circuit around Crown, Dunbar, King, Mitchell, and have parallel parking on all four blocks		2
Angle parking on Crown Street, behind the school. Move the bus stop around the corner.		1
Maintain parallel parking	1	1
Don't agree with one way street proposal		1
Access and Use	Green dots	Red dots
Relocate pedestrian crossing to a more central location		3
Drainage	Green dots	Red dots
Improve drainage in IGA car park/ always floods during rain	1	4
Ferry car park - sometime big puddles		1

The results indicate that:

- Participants were generally appreciative of the community atmosphere of Stockton and some felt this could be enhanced by creating a public space for gathering and hosting events.
- Traffic flow and parking were the major issues of interest at the Stockton workshop however these were specific to a few locations. A number of proposals were put forward for how these issues could be resolved including making some sections of streets one way, introducing angled parking and improving public transport bus services.
- Two main areas were identified as problems for parking. These were the area near the ferry wharf and the area near the library and IGA.
- A range of issues relating to the aesthetics of the area were identified. A range of ideas were proposed as to how to improve the visual appeal and amenity of the main street in particular. These included more street trees, landscaping, street furniture and improvements to pavements. A range of responses indicated that they felt the area had potential to be significantly more attractive and could take greater advantage of its coastal location.
- The IGA car park and loading dock were identified as a problem area because of the poor connect with the school and the fact it floods during storm events.