



Wallsend Local Centre

Public Domain Plan

Consultation Workshop Outcomes

November 2016

November 2016

Prepared by: Corporate Services, Newcastle City Council

Enquiries: engage@ncc.nsw.gov.au or phone 4974 2238

Table of Contents

| | | |
|-----|---|----|
| 1 | Introduction | 1 |
| 1.1 | Objectives | 1 |
| 2 | Methodology | 1 |
| 2.1 | Workshop | 2 |
| 2.2 | Workshop promotion | 2 |
| 2.3 | Workshop activities | 2 |
| 2.4 | Report presentation | 3 |
| 3 | Wallsend Local Centre workshop findings..... | 4 |
| 3.1 | Sticky note issues | 4 |
| 3.2 | Map work - Wallsend | 5 |
| 4 | Appendix I - Verbatim sticky wall results | 9 |
| 5 | Appendix II - Example of signage..... | 11 |

List of Tables and Figures

| | |
|--|----|
| Table 1: What I like about Wallsend sticky notes..... | 4 |
| Table 2: Issues to be addressed in Wallsend local centre | 5 |
| Table 3: Map issues dot voting by theme | 7 |
| Table 4: What I like about Wallsend Local Centre - all comments | 9 |
| Table 5: What issues need to be addressed in Wallsend - all comments | 10 |
| Figure 1: Public Participation Spectrum, International Association of Public Participation | 1 |
| Figure 2: Wallsend workshop sticky wall | 4 |
| Figure 3: Wallsend map work..... | 6 |
| Figure 4: Map activity priority theme voting results..... | 6 |

1 Introduction

A Public Domain Plan is being prepared for Wallsend local Centre in 2016. This plan will inform investment in the public infrastructure of the local centre in the short and medium term. A key component of the development of the Public Domain Plan is consultation with key users of the local centre and the general public.

This report provides an overview of the process and key findings of the first stage of public consultation to inform the development of the draft public domain plan.

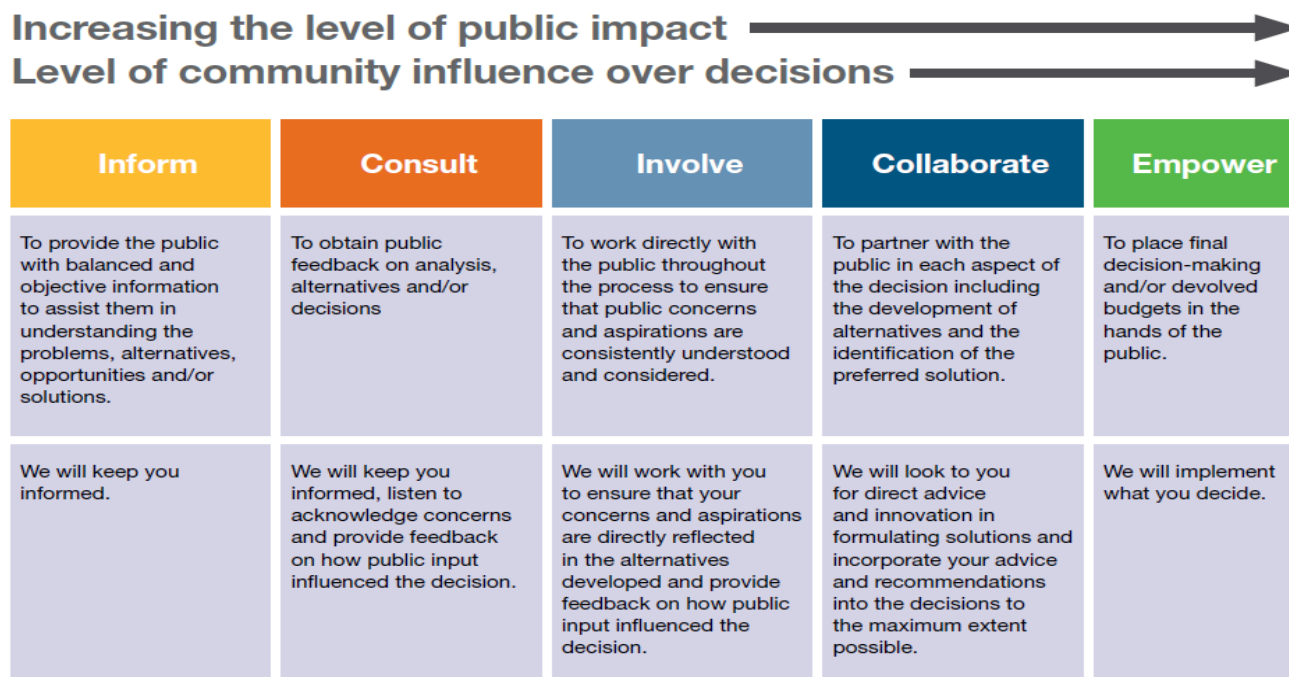
1.1 Objectives

The engagement process aims to capture what the stakeholders' value within the areas and what things they would like to see improved or changed, so that these can be considered in the development of the draft public domain plan. This draft public domain plan will be placed on public exhibition for comment when prepared.

2 Methodology

It was determined that a workshop would be the best way to capture what aspects of the local centre the community currently enjoy and would like to see retained; and how they would like to see change in the future. These workshops fall under the consult category of the IAP2 framework endorsed in Council's Community Engagement Framework.

Figure 1: Public Participation Spectrum, International Association of Public Participation



2.1 Workshop

The workshop was held on Wednesday 16th November at Wallsend library from 6pm to 7.30pm. A total of 15 people attended the workshop.

2.2 Workshop promotion

The invitation to participants in the community workshops were promoted via the following channels:

- Signage (coreflutes) in the Wallsend town centre
- Distribution of postcard in local shops, service centres and library
- Enews
- Facebook
- Flyers and information handed out at Wallsend fair
- Invitation by email to Wallsend Business Improvement Association, Wallsend Diggers, Stockland Mall and Wallsend Baptist Church
- Memo to all Councillors and Lord Mayor
- Letter to the State Member for Wallsend.

Registration was required either by phone or by a website form.

An example of signage is provided in Appendix II.

2.3 Workshop activities

At the workshop an overview of the project was provided by Council's landscape architect Sarah Horan. Consultants Group GSA also provided an overview of the site analysis work that had been undertaken to date, and the opportunities that have been identified.

There were two distinct activities undertaken in the workshop. These were:

1. Sticky wall

Participants were given six sheets of two different coloured (three pink and three green) large sticky note paper. On one colour, participants were asked to indicate in five words or less what they currently like most about Wallsend local centre. On the other coloured sheets, participants were asked to describe what 'issues' they would like to see addressed. These sheets were then placed on a 'sticky wall' for all participants to see.

2. Map work

Six tables were set up, each with a large (AO size) aerial photograph of the local centre and markers. Each table was allocated a theme to guide or prompt discussions.

The six primary themes of the workshops reflect the major elements of the proposed domain plans. These were:

- Traffic
- Access and Use

- Parking
- Trees and Plantings
- Aesthetics
- Drainage

Participants were asked to write on the map their ideas and issues associated with each of the themes. After five minutes participants were asked to move to another table, this happened six times until all participants had had the opportunity to write their ideas on each theme's aerial photograph.

Finally, each participant was given three green and three red sticky dots, and asked to use these to prioritise what they felt were the most important theme (green) and the most important specific idea/issue (red). They could put all their dots on one item or spread them across multiple items.

2.4 Report presentation

The workshop report should be read in conjunction with viewing the original workshop maps. These have been provided to the team preparing the draft public domain plans.

3 Wallsend Local Centre workshop findings

3.1 Sticky note issues

Table 1 (what I like about Wallsend) and Table 2 (issues that need to be addressed in Wallsend) show an edited and condensed list of the items and issues that were written on the sticky notes at the Wallsend workshop. A table containing all of the verbatim comments on the sticky wall is provided in Appendix I.

Figure 2: Wallsend workshop sticky wall



Table 1: What I like about Wallsend sticky notes

| What I like about Wallsend Local Centre | |
|--|----|
| Community/village feel | 11 |
| Historic/heritage | 5 |
| Business network/social media | 5 |
| Community planter project | 5 |
| Town layout/parking/traffic access | 4 |
| Gardens | 1 |
| Library building | 1 |
| Flow of water Iron bark creek | 1 |
| Rotunda | 1 |
| Railway goods shed | 1 |
| Children's artwork - school could be responsible | 1 |

The results indicate that:

- *The community/village feel* of Wallsend was the aspect of the local centre that participants most valued
- *The historic/heritage nature* of the area as well as *the business network and the use of social media* were also aspects that were mentioned by several participants
- *The community planter project and ease of access through the town* were also highly valued.

Table 2: Issues to be addressed in Wallsend local centre

| Issues in Wallsend town centre | |
|---|---|
| Maintenance/graffiti issues | 6 |
| NIB building taking up too much parking | 5 |
| More/better maintained greening | 5 |
| Streetscape, aesthetics and amenities | 4 |
| Parking issues general | 4 |
| Traffic flow/connectivity issues | 4 |
| More/different businesses on main street | 3 |
| Better cycleways | 2 |
| Garbage collection issues | 2 |
| Better disability access | 2 |
| more police presence | 2 |
| Iron bark creek needs to be restored as a feature | 1 |
| Foot crossing to have some lights | 1 |
| Drainage - (flooding) | 1 |
| Complimentary interaction between existing (future) public domain & private development | 1 |

Issues that need to be addressed that were raised by at least five participants were:

- *Maintenance/graffiti issues*
- *The position of the NIB building affecting the availability of parking*
- *The need for more/better maintained greening.*

3.2 Map work - Wallsend

Six aerial photo maps were used in the workshop for people to spatially locate their issues and ideas relating to each of the major project themes. An example is provided in Figure 3.

Figure 3: Wallsend map work

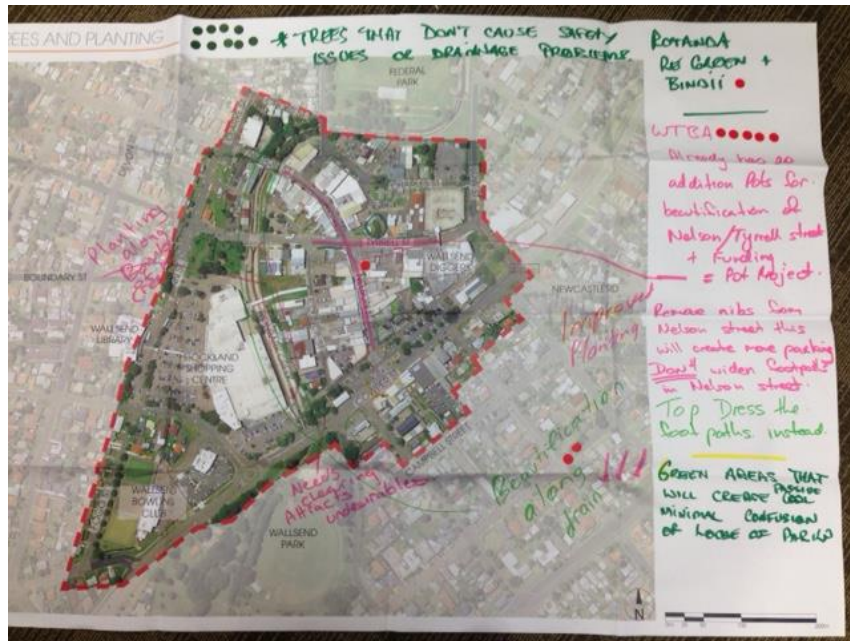


Figure 4 shows how many green dot votes each theme map received. That is how many people used their green dots to indicate that they felt the theme was a major priority.

Figure 4: Map activity priority theme voting results

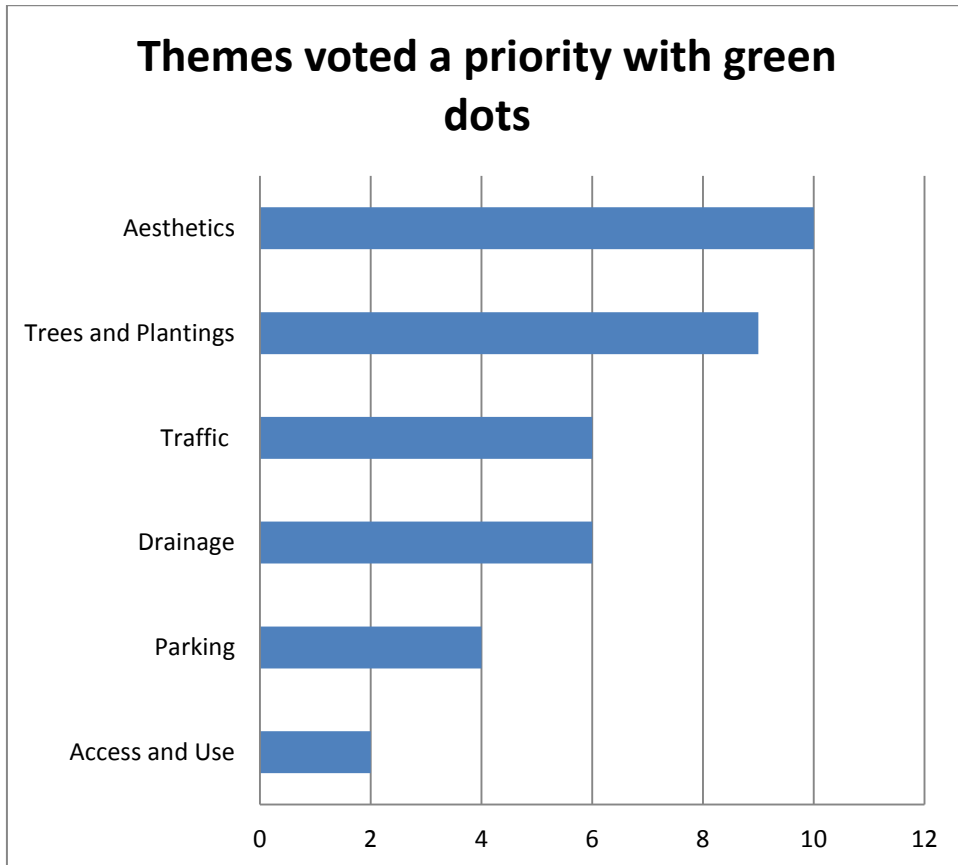


Table 3 highlights all the issues/items that received red dot votes on each of the six themed maps. Where participants used their green dot to 'vote' for an issue or idea rather than a theme these have been included in the tables below.

Table 3: Map issues dot voting by theme

| Aesthetics (Green dots 10) | Red dots |
|--|-----------------|
| Gateway - Definition - Cowper Street main- low - Nelson - and existing roundabout in Cowper Street | 1 |
| Trams - Nelson Street | |
| Lack of sense of community space interaction- need for increase sense of place - city centre | |
| Council maintenance program | |
| Tree management program | |
| Tyrrell Street and Nelson Street intersection | 1 |
| Green, green, green | |
| Pavement consistency - sign posting of historical sites | |
| Flags/banners on Thomas Street of history, retail etc. | 1 |
| Flag pole is already at the top end of Nelson Street 40 in total | |
| TPI house Gardens need to be up kept from council, looks unsafe & tired signage to Nelson Street, retail | |
| Newcastle Road and Cowper Street intersection -rose garden | |
| Iron Bark Creek | 2 |
| Trees and Plantings (Green dots 9) | Red dots |
| Planting along banks of iron bark creek | |
| Trees that don't cause safety issues or drainage problems | |
| Improve planting - Cowper Street - Nelson St | 1 |
| Beautification along drain | 2 |
| Needs clearing attracts undesirables - Cowper Street -next to iron bark creek | |
| WTBA- already has 20 additional pots for beautification of Nelson/Tyrrell Street & funding for pot project | 5 |
| Top dress the footpath instead | |
| Remove NIB from Nelson Street this will create more parking DON'T widen footpath in Nelson Street | |
| Green areas that will create passive cool, minimal confusion or loss of parking | |
| Rotunda - RE Green and Bindii | 1 |
| Traffic (Green dots 6) | Red dots |
| One way traffic flow - Council Street | 5 |
| Install roundabout - Low and Cowper Streets | 2 |
| Council Street -all wrong | |
| One way angle parking - Nelson Street | |
| Improve gateway (speed reduction)- Clarke and Nelson Streets | |
| Need to consider Medcalf Street | 2 |
| Tram - Cowper Street | |
| Cowper Street Kokkera Street Crossing | |
| Dan Rees carpark entrance - One big entrance needs an in and out | |

| | |
|--|-----------------|
| Problem area for crossing - Cowper and Murnin Streets | |
| Solution - roundabout - existing in Cowper Street | |
| Dan Rees Street one way | |
| Drainage (Green dots 6) | Red dots |
| Tyrrell Street carpark flooding | |
| Fix ASAP Higher bridge on Tyrrell Street | 5 |
| Not concrete keep green - iron bark creek - Cowper Street to Nelson Street | 3 |
| Tree roots - major drain Nelson Street North | 2 |
| Council water tank | |
| Naturalised creek | 2 |
| Syphon Brooks Street near Cowper Street | |
| Parking (Green dots 4) | Red dots |
| Improve public transport | |
| Federal park - trees vs park - private vs public | |
| More parking - or University addresses problem - Council Street students park in Stockland and Cowper Street council park area and catch bus to university | 2 |
| Remove NIB in main Street - Nelson Street | |
| Follow Lambton, lease to council make continuous carpark behind shops on Council Street both sides of Tyrrell Street | 1 |
| Access and use (Green dots 2) | Red dots |
| Make into a zebra crossing due to high pedestrian (gym) on Nelson Street between Tyrrell and Boscawen Streets | |
| Connect Nelson Street - Council Street | |
| Access to Main Street clear and shop to give connectability | |
| Bike track from Wallsend Diggers through Stockland car park, over ironbark creek and along to connect to a roundabout at Low Street and Newcastle Road | 1 |
| Huge disconnect between centres (Stockland and town centre) | 6 |

The results indicate that:

- The theme that received the most priority green dots was *Aesthetics* followed by *Trees and Planting*. These themes are reflective of the 'issues that need to be addressed in Wallsend' raised in the sticky wall exercise; two of the three top issues were *Maintenance/graffiti issues* and *More/better maintained greening*
- Specific ideas/issues that received at least five priority red dots were:
 - *Huge disconnect between centres (Stockland and town centre)* n=6; under the theme *Access and use*
 - *Fix ASAP Higher Bridge on Tyrrell Street* n=5; under the theme *Drainage*
 - *One way traffic flow - Council Street* n=5; under the theme *Traffic*
 - *WTBA - already has 20 additional pots for beautification of Nelson/Tyrrell Street and funding for pot project* n=5; under the theme *Trees and Planting*.

4 Appendix I - Verbatim sticky wall results

Table 4: What I like about Wallsend Local Centre - all comments

| What I Like about Wallsend - all comments |
|---|
| Railway goods shed |
| Rotunda |
| Flow of water Iron bark creek |
| Easy access to get around |
| Heritage of Nelson St |
| Library building |
| The Heritage of the area |
| Parking in the centre is good - most retail outlets within walking distance |
| Road access to/from in the Wallsend centre is good |
| pour area (gardens) |
| Community |
| People - Community |
| There is a small network of business that promote each other |
| Op shops |
| New generation of locals |
| Great community feel |
| History |
| Layout |
| Social media -face book pages-e.g.: Wallsend town business assoc and Wallsend now /Then |
| Community spirit when it comes to Anzac day/ Remembrance day etc. |
| Village feel |
| Pro -Active WTBA trying to build Wallsend profile * Community * |
| Community minded |
| New pot project |
| Social media |
| Community support |
| Community minded |
| Pots new in main street |
| Country feel of town - gardens that are neglected - |
| Sense of village feel - Not to big Not to small - |
| Sense of History |
| Historical significant sites |
| Artistic pots - bike racks - community garden |
| Pot project |
| Big pots |
| Children Artwork school could be responsible |

Table 5: What issues need to be addressed in Wallsend - all comments

| What issues need to be addressed in Wallsend Local Centre - all comments |
|---|
| Lack of aesthetics |
| graffiti not be cleaned up - more street maintenance |
| NIB in main street - preventing extra parking |
| NIB in main street - less parking |
| Connection Stockland to Nelson Street |
| Lack of tree scape |
| disability access to shop fronts |
| Parallel parking in Nelson St difficult (to much traffic) - roundabout at Low st & Newcastle Rd |
| Iron bark creek needs to be restored as a feature |
| Footpath maintenance needs work |
| Main street died - needs work |
| Back of shops parking like Lambton |
| Seating in main street |
| Trees attended |
| Foot crossing to have some lights |
| Parking - removal of NIB |
| Waste space that needs landscaping |
| Access for people with disabilities |
| Needs more retail/restaurants |
| Tied looking - lack of street scape (gardens, new footpath, paving, sufficient lighting) |
| Unkempt |
| Street NIB that takes up parking space |
| Garbage collection -doesn't happen regular day - supposed to be every Friday |
| Disjoint between Main St and shopping centre |
| Garbage collection - re addressed council street in Tyrrell street car park end |
| Need police presence |
| Car parking |
| Traffic flow |
| Street scape & amenities |
| Disconnect between Wallsend main street & Stockland mall - access for cyclists off main though pathway not provided for |
| More small business - e.g. Greengrocer |
| Better ,safer bicycle paths, access |
| More green - passing cooling (streets) for hot weather |
| Graffiti - council clean-up of graffiti when its reported |
| More police presence |
| Trees in main street |
| Nib in nelson st |
| Bus stops that are not used bus shelters that are damaged |
| Footpaths that are not safe |
| Council street traffic layout |
| Drainage - (flooding) |
| Graffiti |
| Complimentary interaction between existing (future) public domain & private development |
| Mark out parking in street to generate more spaces -(Nelson St) |

5 Appendix II - Example of signage



Wallsend Local Centre Public Domain Plan Workshop

**Come along to our workshop to share what you value about
Wallsend local centre and identify areas for improvement.**

Feedback gained through the workshop will assist with future
planning and developing a Public Domain Plan.

When: Wednesday 16 November 2016

Time: 6 - 7.30pm

Location: Wallsend Library, 30 Bunn Street, Wallsend

RSVP: Before Monday 14 November 2016

To RSVP please visit www.newcastle.nsw.gov.au, go to the
community tab, get involved and then have your say or phone
4974 2238 before Monday 14 November 2016.

For enquiries please call 4974 2238

For more information visit:
www.newcastle.nsw.gov.au

