

2024/25: AREA 1 – FRIDAY

Waste Calendar



City of Newcastle



Green lid & Red lid bins



Yellow lid & Red lid bins



Public Holiday
Services as usual (except Christmas)



2 Chemical CleanOut
Free drop-off day. Visit cleanout.com.au



16 Linen Recycling
Free drop-off day. Visit newcastle.nsw.gov.au

July 2024

| Mo | Tu | We | Th | Fr | Sa | Su |
|----|----|----|----|----|----|----|
| 1 | 2 | 3 | 4 | 5 | 6 | 7 |
| 8 | 9 | 10 | 11 | 12 | 13 | 14 |
| 15 | 16 | 17 | 18 | 19 | 20 | 21 |
| 22 | 23 | 24 | 25 | 26 | 27 | 28 |
| 29 | 30 | 31 | | | | |

August 2024

| Mo | Tu | We | Th | Fr | Sa | Su |
|----|----|----|----|----|----|----|
| | | | 1 | 2 | 3 | 4 |
| 5 | 6 | 7 | 8 | 9 | 10 | 11 |
| 12 | 13 | 14 | 15 | 16 | 17 | 18 |
| 19 | 20 | 21 | 22 | 23 | 24 | 25 |
| 26 | 27 | 28 | 29 | 30 | 31 | |

September 2024

| Mo | Tu | We | Th | Fr | Sa | Su |
|----|----|----|----|----|----|----|
| 30 | | | | | | 1 |
| 2 | 3 | 4 | 5 | 6 | 7 | 8 |
| 9 | 10 | 11 | 12 | 13 | 14 | 15 |
| 16 | 17 | 18 | 19 | 20 | 21 | 22 |
| 23 | 24 | 25 | 26 | 27 | 28 | 29 |

October 2024

| Mo | Tu | We | Th | Fr | Sa | Su |
|----|----|----|----|----|----|----|
| | 1 | 2 | 3 | 4 | 5 | 6 |
| 7 | 8 | 9 | 10 | 11 | 12 | 13 |
| 14 | 15 | 16 | 17 | 18 | 19 | 20 |
| 21 | 22 | 23 | 24 | 25 | 26 | 27 |
| 28 | 29 | 30 | 31 | | | |

November 2024

| Mo | Tu | We | Th | Fr | Sa | Su |
|----|----|----|----|----|----|----|
| | | | | 1 | 2 | 3 |
| 4 | 5 | 6 | 7 | 8 | 9 | 10 |
| 11 | 12 | 13 | 14 | 15 | 16 | 17 |
| 18 | 19 | 20 | 21 | 22 | 23 | 24 |
| 25 | 26 | 27 | 28 | 29 | 30 | |

December 2024

| Mo | Tu | We | Th | Fr | Sa | Su |
|----|----|--|----|-----|----|----|
| 30 | 31 | *Fri 27-Dec service deferred to Sat 28-Dec | | | | 1 |
| 2 | 3 | 4 | 5 | 6 | 7 | 8 |
| 9 | 10 | 11 | 12 | 13 | 14 | 15 |
| 16 | 17 | 18 | 19 | 20 | 21 | 22 |
| 23 | 24 | 25 | 26 | 27* | 28 | 29 |

January 2025

| Mo | Tu | We | Th | Fr | Sa | Su |
|----|----|----|----|----|----|----|
| | | 1 | 2 | 3 | 4 | 5 |
| 6 | 7 | 8 | 9 | 10 | 11 | 12 |
| 13 | 14 | 15 | 16 | 17 | 18 | 19 |
| 20 | 21 | 22 | 23 | 24 | 25 | 26 |
| 27 | 28 | 29 | 30 | 31 | | |

February 2025

| Mo | Tu | We | Th | Fr | Sa | Su |
|----|----|----|----|----|----|----|
| | | | | | 1 | 2 |
| 3 | 4 | 5 | 6 | 7 | 8 | 9 |
| 10 | 11 | 12 | 13 | 14 | 15 | 16 |
| 17 | 18 | 19 | 20 | 21 | 22 | 23 |
| 24 | 25 | 26 | 27 | 28 | | |

March 2025

| Mo | Tu | We | Th | Fr | Sa | Su |
|----|----|----|----|----|----|----|
| 31 | | | | | 1 | 2 |
| 3 | 4 | 5 | 6 | 7 | 8 | 9 |
| 10 | 11 | 12 | 13 | 14 | 15 | 16 |
| 17 | 18 | 19 | 20 | 21 | 22 | 23 |
| 24 | 25 | 26 | 27 | 28 | 29 | 30 |

April 2025

| Mo | Tu | We | Th | Fr | Sa | Su |
|----|----|----|----|----|----|----|
| | 1 | 2 | 3 | 4 | 5 | 6 |
| 7 | 8 | 9 | 10 | 11 | 12 | 13 |
| 14 | 15 | 16 | 17 | 18 | 19 | 20 |
| 21 | 22 | 23 | 24 | 25 | 26 | 27 |
| 28 | 29 | 30 | | | | |

May 2025

| Mo | Tu | We | Th | Fr | Sa | Su |
|----|----|----|----|----|----|----|
| | | | 1 | 2 | 3 | 4 |
| 5 | 6 | 7 | 8 | 9 | 10 | 11 |
| 12 | 13 | 14 | 15 | 16 | 17 | 18 |
| 19 | 20 | 21 | 22 | 23 | 24 | 25 |
| 26 | 27 | 28 | 29 | 30 | 31 | |

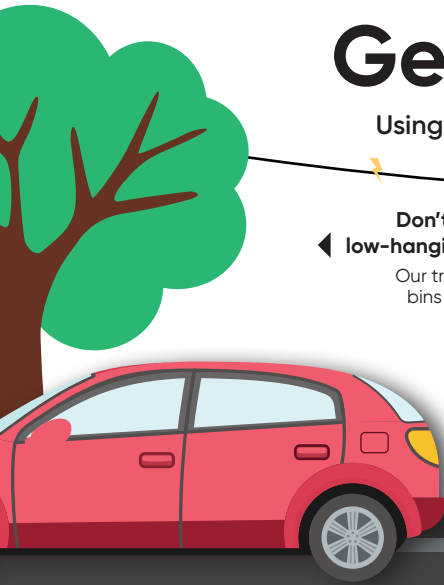
June 2025

| Mo | Tu | We | Th | Fr | Sa | Su |
|----|----|----|----|----|----|----|
| 30 | | | | | | 1 |
| 2 | 3 | 4 | 5 | 6 | 7 | 8 |
| 9 | 10 | 11 | 12 | 13 | 14 | 15 |
| 16 | 17 | 18 | 19 | 20 | 21 | 22 |
| 23 | 24 | 25 | 26 | 27 | 28 | 29 |

To report a missed collection service or a damaged/missing bin, visit newcastle.nsw.gov.au/waste-requests or call **4974 2000** for RED LID and GREEN LID bins or **4920 1455** for YELLOW LID bins.

Get it right on bin night

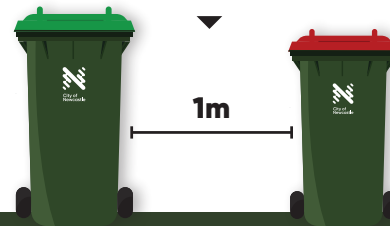
Using and placing your bins correctly helps our trucks to service them



Don't place bins under low-hanging power lines or trees
Our trucks need to lift your bins up high to tip them

Try to space bins one metre apart
This helps our truck's lifting arm to reach your bins

Place bins away from parked cars



Place bins away from poles



Put bins on kerb by 5am on your collection day



Don't overload. Our trucks can't lift bins that are too heavy



Don't contaminate. Only put accepted wastes in each bin



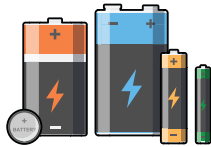
Don't cram. Your bin won't empty if it's packed too tightly

Keep these items out of your bins

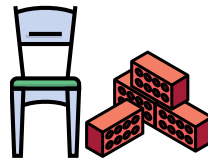
Some things don't belong in your kerbside bins. Batteries and vapes can start fires inside our collection trucks or at processing facilities. Syringes and other medical wastes can harm or injure staff. Electronic waste and chemicals—such as paint, coolant and poisons—can impact human health and the environment if not disposed of responsibly. And building wastes, such as bricks and concrete, can make your bin too heavy for our trucks' arms to lift—or cause considerable damage should they find their way into our vehicles.



✗ Chemicals



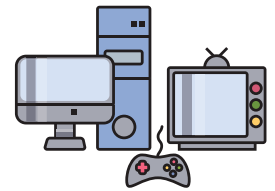
✗ Batteries



✗ Heavy/bulky items



✗ Medical waste



✗ Electronic waste

Free drop-off services are available to safely dispose of, or recycle, these wastes. Please call us or visit our website for your nearest options.

Contact us



To report a missed service, damaged or missing bin

Please wait until 4pm to report a missed collection, unless all other households in your street appear to have had that particular bin serviced.

| | |
|-------|---|
| Web | newcastle.nsw.gov.au/waste-requests |
| App | City of Newcastle App Available to download via the Apple Store and Google Play—search 'City of Newcastle' |
| Phone | <ul style="list-style-type: none"> For RED lid bins, call 4974 2000 For GREEN lid bins, call 4974 2000 For YELLOW lid bins, call 4920 1455 |

Summerhill Waste Management Centre

120 Summerhill Road (off Minmi Road), Wallsend

Operating hours

| | |
|---------------------------|---------------|
| Weekdays | 7.30am–4.45pm |
| Weekends/public holidays* | 9am–2.45pm |

*Closed Good Friday and Christmas Day

Office hours

| | |
|---------------------------|------------|
| Weekdays (Call 4974 2000) | 8.30am–4pm |
| Weekends/public holidays | Closed |

For general enquiries, call **4974 2000** 8am–5pm Monday–Friday (excl. public holidays) or visit newcastle.nsw.gov.au