

BUSINESS PACKAGE 2024/25

# WORKING *Together*



FOR MORE DETAILS 02 4974 1460 // [cityhall@ncc.nsw.gov.au](mailto:cityhall@ncc.nsw.gov.au) // [newcastle.nsw.gov.au/city-hall](http://newcastle.nsw.gov.au/city-hall)



Newcastle  
City Hall



- 3 ABOUT THE VENUE
- 4 VENUE OPTIONS
- 10 IN-HOUSE CATERING
- 12 DAY DELEGATE PACKAGE
- 14 MORNING TEA
- 15 AFTERNOON TEA
- 16 CONDITIONS



## ABOUT THE VENUE



## THANK YOU FOR CONSIDERING NEWCASTLE CITY HALL FOR YOUR EVENT

Opened in 1929, this stunning venue is one of Newcastle's most prestigious and unique venues. With its grand architecture, sandstone pillars and marble staircases, Newcastle City Hall definitely makes an impression.

With seven accessible function rooms, Newcastle City Hall has played host to a vast array of functions, including civic receptions, community gatherings, weddings, national and international conferences, trade shows and expos, corporate meetings, product launches and social events.

Only 20 minutes from Newcastle Airport with direct flights to most capital cities and near a range of public transport options, Newcastle City Hall has over 2000 accommodation rooms within a leisurely 10 minute stroll. It is also adjacent to the majestic Civic Theatre, offering an additional 1500 seat venue as well as Wheeler Place, a versatile 1200m<sup>2</sup> open air space, offering a blank canvas for your next event.

Your event will be in safe and experienced hands with the Newcastle City Hall team. Our high-quality service standards, professionalism and impeccable attention to detail will ensure you and your guests have the ultimate event experience from beginning to end.



**KEY**

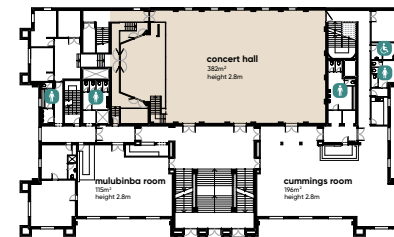
BUS	ACCESSIBLE PARKING
LIGHT RAIL	PARKING
TAXI	



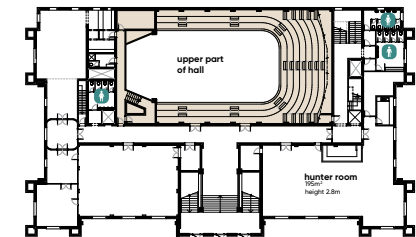
# concert hall

The Concert Hall has been acclaimed as one of the finest auditoriums in Australia. It features excellent natural acoustics, air conditioning, superior lighting and comfortable lower and upper gallery seating. The Concert Hall is regularly used for concerts, conferences, balls, gala dinners and exhibitions.

FIRST FLOOR



UPPER FLOOR



AREA  
**382M<sup>2</sup>**



THEATRE  
**805**



BANQUET  
**290**



CABARET  
**200**



COCKTAIL  
**500**



BOARDROOM  
**N/A**



U-SHAPE  
**N/A**



CLASSROOM  
**138**



CEILING HEIGHT  
**2.8-14M**

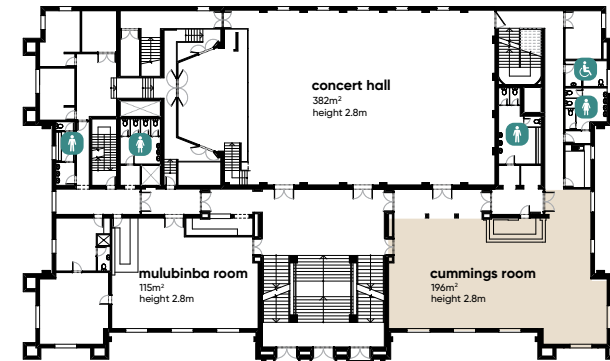
The capacities listed don't take into account the space required for dancefloors, catering stations, additional staging or AV desks.



# cummings room

The Cummings Room is booked in conjunction with the Concert Hall and is situated directly adjacent to the Concert Hall, with views over the picturesque Civic Park. It has private bar facilities and is ideal for corporate functions, dinners and cocktail parties. The Cummings Room is commonly used as the foyer for the Concert Hall and makes an ideal morning and afternoon tea break area.

## FIRST FLOOR



AREA  
**193M<sup>2</sup>**



THEATRE  
**130**



BANQUET  
**100**



CABARET  
**72**



COCKTAIL  
**150**



BOARDROOM  
**30**



U-SHAPE  
**32**



CLASSROOM  
**54**



CEILING HEIGHT  
**2.8M**

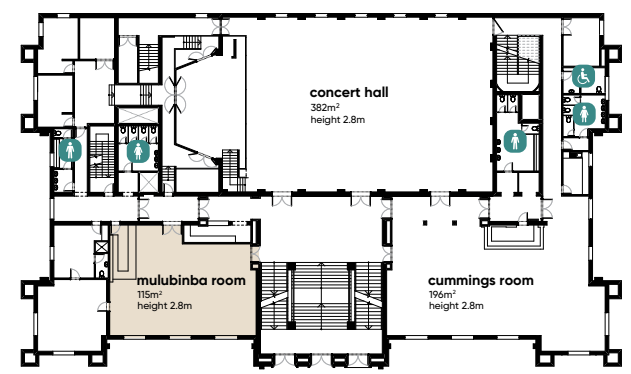
The capacities listed don't take into account the space required for catering stations, staging or AV desks.



# mulubinba room

Located on the first floor, the Mulubinba Room boasts an authentic Art Deco atmosphere. This fully carpeted room features an abundance of natural light with views across Civic Park and is ideal for meetings, training sessions or as a breakout in conjunction with our larger rooms.

## FIRST FLOOR



AREA  
**114M<sup>2</sup>**



THEATRE  
**80**



BANQUET  
**60**



CABARET  
**48**



COCKTAIL  
**80**



BOARDROOM  
**28**



U-SHAPE  
**26**



CLASSROOM  
**36**



CEILING HEIGHT  
**2.8M**

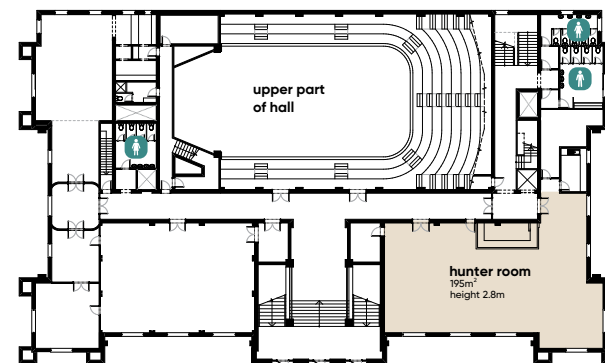
The capacities listed don't take into account the space required for catering stations, staging or AV desks.



# hunter room

Located on the second floor of Newcastle City Hall, the Hunter Room's elegant high-arched windows frame picture perfect views over Civic Park. It has private bar facilities, amenities, a dance floor, and balcony. With an abundance of natural light, it is ideal for meetings, training sessions, cocktail parties and gala dinners.

## UPPER FLOOR



AREA  
**200M<sup>2</sup>**



THEATRE  
**150**



BANQUET  
**110**



CABARET  
**72**



COCKTAIL  
**150**



BOARDROOM  
**30**



U-SHAPE  
**32**



CLASSROOM  
**63**



CEILING HEIGHT  
**2.8M**

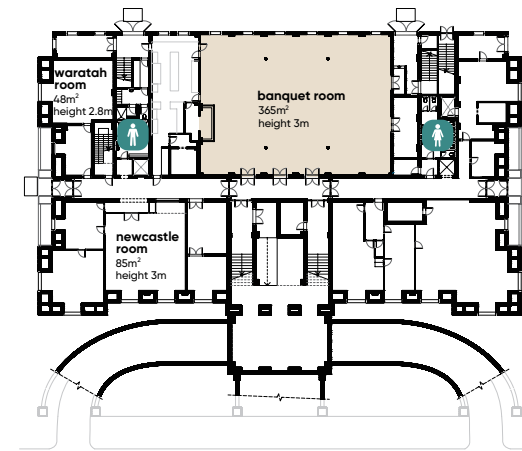
The capacities listed don't take into account the space required for catering stations, staging or AV desks.



# banquet room

Located on the ground floor, with polished floors, high ceilings and natural light, the Banquet Room provides you with an opportunity to design a room that reflects your individual tastes and style. With private bar facilities this room is ideal for corporate dinners, trade displays, catering breaks and meetings.

## GROUND FLOOR



AREA  
**365M<sup>2</sup>**



THEATRE  
**300**



BANQUET  
**220**



CABARET  
**144**



COCKTAIL  
**300**



BOARDROOM  
**N/A**



U-SHAPE  
**40**



CLASSROOM  
**99**



CEILING HEIGHT  
**3M**

The capacities listed don't take into account the space required for catering stations, staging or AV desks.

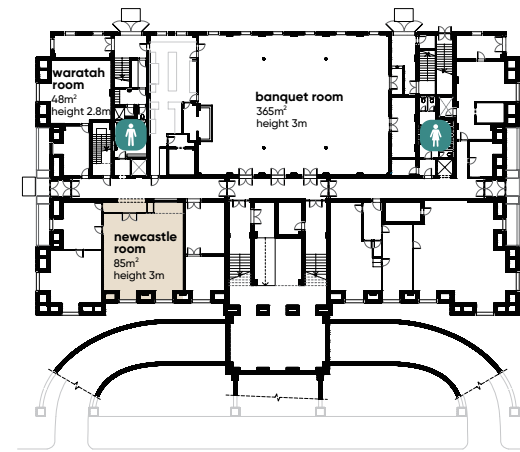




# newcastle room

Located on the ground floor, the versatile Newcastle Room is a perfect space for intimate meetings, workshops or presentations. The Newcastle Room is an ideal breakout space to the nearby Banquet Room.

## GROUND FLOOR



AREA  
**85M<sup>2</sup>**



THEATRE  
**60**



BANQUET  
**50**



CABARET  
**40**



COCKTAIL  
**60**



BOARDROOM  
**28**



U-SHAPE  
**20**



CLASSROOM  
**27**



CEILING HEIGHT  
**3M**

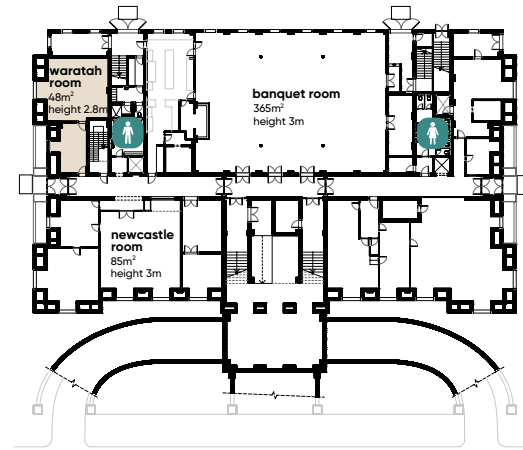
The capacities listed don't take into account the space required for catering stations, staging or AV desks.



# waratah room

The Waratah Room boasts a separate vestibule making it ideal for interviews, tribunals, registrations or as a private area for morning/afternoon tea and lunch breaks.

GROUND FLOOR



AREA  
**48M<sup>2</sup>**



THEATRE  
**30**



BANQUET  
**20**



CABARET  
**16**



COCKTAIL  
**30**



BOARDROOM  
**16**



U-SHAPE  
**18**



CLASSROOM  
**12**



CEILING HEIGHT  
**2.8M**



# produce map

## IN-HOUSE CATERING

# local flavour to savour

Our dedicated hospitality team is here to provide you with outstanding dining and top-tier service in one of our city's iconic and historic venues.

Your event will be in safe and experienced hands with the Newcastle City Hall team. We will work closely with you to ensure your event runs efficiently and has the desired impact to ensure business objectives are met. Our high-quality service standards, professionalism and impeccable attention to detail will ensure you and your guests have the ultimate event experience from beginning to end.

At City Hall, we highlight the finest local and seasonal ingredients in our menus. We support local suppliers from within the Hunter Joint Organisation and our focus is on wholesome, feel-good food made fresh with artisan products and minimal processing. With a steadfast dedication to creating everything in-house, we deliver memorable, restaurant-quality dishes that are not only nutritionally balanced but also bursting with local flavour.

# full day delegate package

## MINIMUM OF 40 GUESTS

### INCLUSIONS

---

Plenary room hire from 9.00am to 5.00pm

---

Freshly brewed local coffee, specialty teas, & house-made iced tea on arrival

---

### MORNING TEA BREAK

Freshly brewed local coffee, specialty teas & house-made iced tea are served with the daily morning tea item & a selection of seasonal sliced fruits, yoghurt, & honey

---

### LUNCH

Select one from the following lunch options:

- Build your own sandwich & salad lunch buffet plus daily salads
- Artisan breads, wraps & salad buffet plus daily salads
- Daily hot working lunch plus daily salads

Accompanied by freshly brewed local coffee, specialty teas, house-made iced tea, soft drinks & assorted East Coast juices

---

### AFTERNOON TEA BREAK

Freshly brewed local coffee, specialty teas & house-made iced tea are served with the daily afternoon tea item & a selection of vegetable crudites & house-made dips

---

Notepads, pens, mints, still & sparkling water

---

Audio visual: WIFI, data projector, screen, whiteboard, flip chart, wired microphone and lectern

---

**MON-FRI**

Commercial\*

**\$80 PP**

NFP\*

**\$75 PP**

\*Per person per day.

DAY DELEGATE PACKAGES



# half day delegate package

## MINIMUM OF 40 GUESTS

### INCLUSIONS

Plenary room hire from 8.00am to 12:00pm or 1:00pm to 5.00pm

Freshly brewed local coffee, specialty teas & house-made iced tea on arrival

### MORNING/AFTERNOON TEA BREAK

Freshly brewed local coffee, specialty teas & house-made iced teas served with two break items

### LUNCH

Select one from the following lunch options:

- Build your own sandwich & salad lunch buffet plus daily salads
- Artisan breads, wraps & salad buffet plus daily salads
- Daily hot working lunch plus daily salads

Accompanied by freshly brewed local coffee, specialty teas, house-made iced tea, soft drinks & assorted East Coast juices

Notepads, pens, mints, still & sparkling water

Audio Visual: WIFI, data projector, screen, whiteboard, flip chart, wired microphone & lectern

### MON-FRI

Commercial\*

**\$ 60 PP**

NFP\*

**\$ 56 PP**

\*Per person per day.



# morning tea options

MONDAY	Double smoked ham & Swiss cheese petit croissants
TUESDAY	Zucchini & semi-dried tomato savoury muffins <b>GF V</b>
WEDNESDAY	Bakers batch scones with jam & Chantilly cream <b>V</b>
THURSDAY	Chefs' selection of assorted petit glazed Danishes <b>V</b>
FRIDAY	Roast vegetable frittatas with marinated Binnorie fetta <b>GF V</b>

Morning tea items served with a selection of seasonal sliced fruits, yoghurt & honey **V**

Dairy Free **DF** Gluten Free **GF** Vegan **VGN** Vegetarian **V**

Dairy Free Option **DF** Gluten Free Option **GFO** Nut Free Option **NFO**



# afternoon tea options

MONDAY	House-baked gingerbread muffins <b>DF GF V</b>
TUESDAY	Chefs' selection of assorted house-baked cookies <b>V</b>
WEDNESDAY	Bacon and egg cups with tomato chutney <b>DF GF</b>
THURSDAY	Mini chicken & leek pies <b>GF</b>
FRIDAY	Assorted house-baked friands <b>GF V</b>

Afternoon tea items served with a selection of vegetable crudité's  
and house-made dips **GF V**

Dairy Free **DF** Gluten Free **GF** Vegan **VGN** Vegetarian **V**

Dairy Free Option **DFO** Gluten Free Option **GFO** Nut Free Option **NFO**

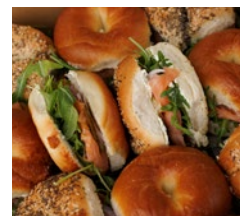




## CONDITIONS

Pricing is valid for events held Monday to Friday in the 2024/25 financial year. Please contact us for weekend and public holiday pricing.

Food and beverage offerings are subject to change according to season and availability. Minimum of 40 guests. Room allocations will be determined by the Newcastle City Hall team based on your guest numbers.







Newcastle  
City Hall

FOR MORE DETAILS

p. 02 4974 1460

e. [cityhall@ncc.nsw.gov.au](mailto:cityhall@ncc.nsw.gov.au)

w. [newcastle.nsw.gov.au/city-hall](http://newcastle.nsw.gov.au/city-hall)

290 King Street  
Newcastle NSW 2300