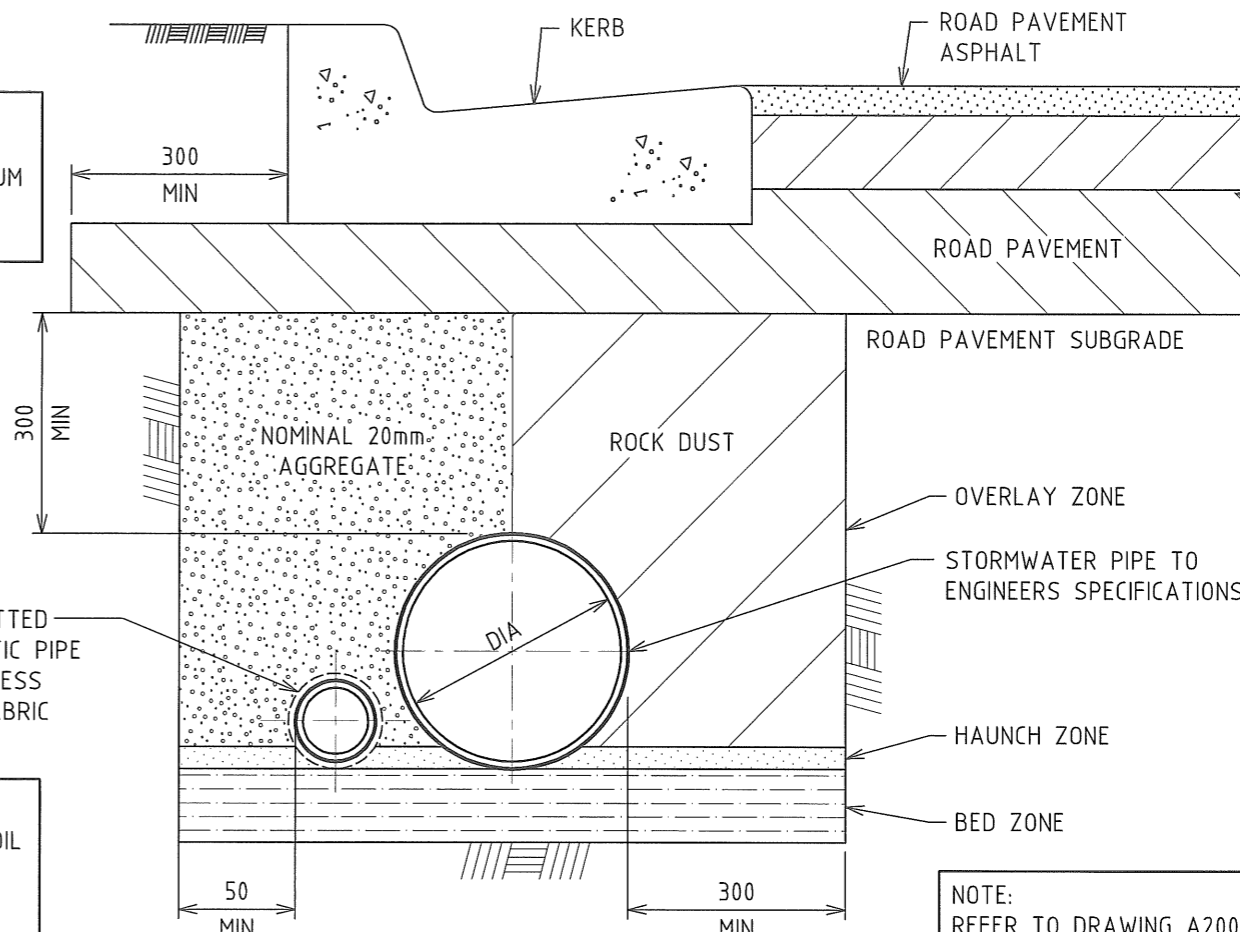


SUBSOIL DRAIN - TYPE 1
SCALE 1:10

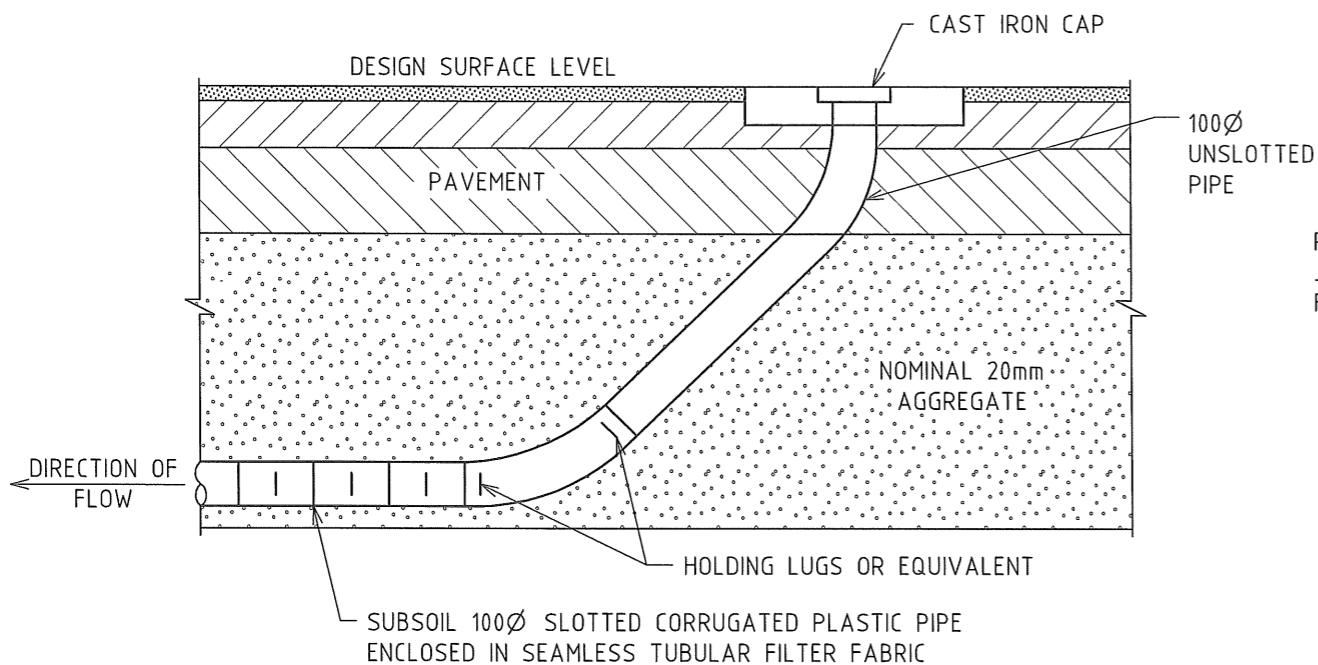
NOTE:
FOUNDING MATERIAL
TO ACHIEVE A MINIMUM
ALLOWABLE BEARING
CAPACITY OF 150KPa



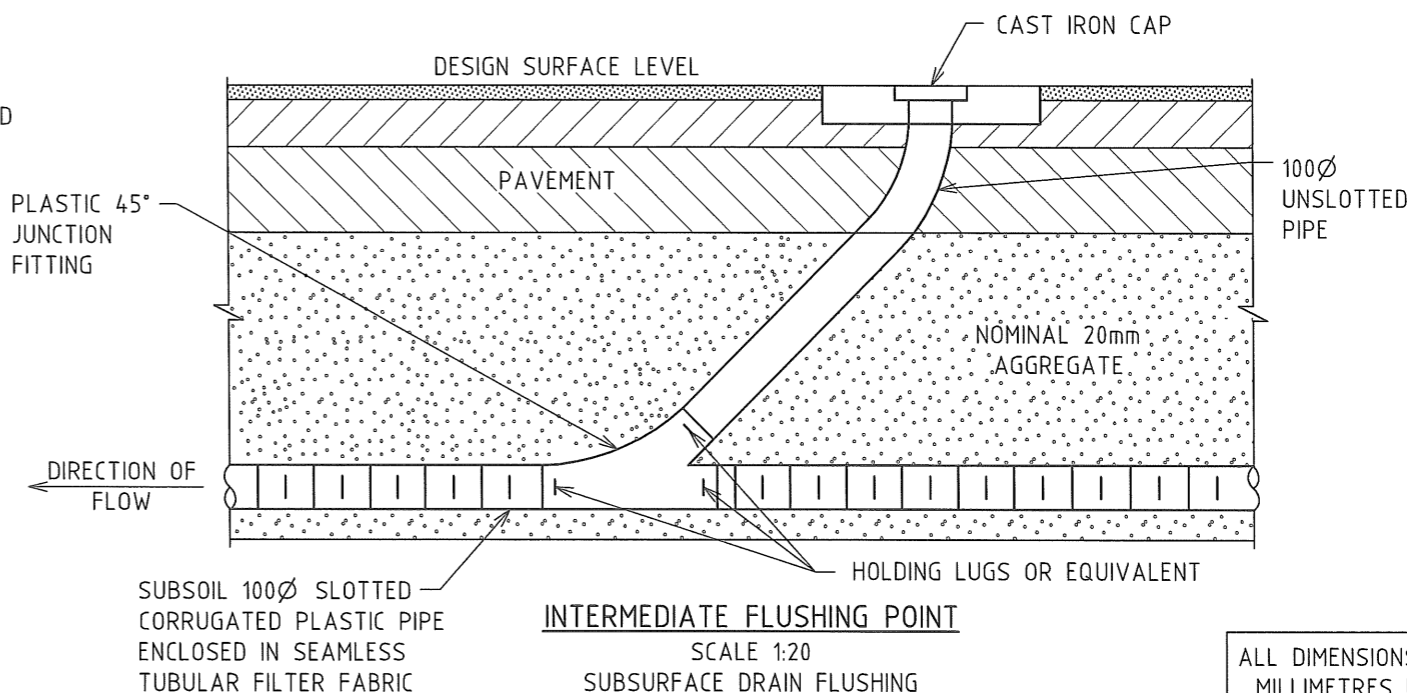
SUBSOIL DRAIN - TYPE 2
SCALE 1:10

NOTE:
REFER TO DRAWING A2000
FOR STORMWATER PIPE
INSTALLATION DETAILS TYPE
H1 BEDDING.

NOTE:
TYPE, LOCATION AND EXTENT OF SUBSOIL
DRAINAGE WILL DEPEND ON PAVEMENT
MATERIALS TO BE USED AND ON SITE
CONDITIONS. PRIOR ADVICE SHOULD BE
SOUGHT FROM THE GEOTECHNICAL
CONSULTANT PRIOR TO CONSTRUCTION



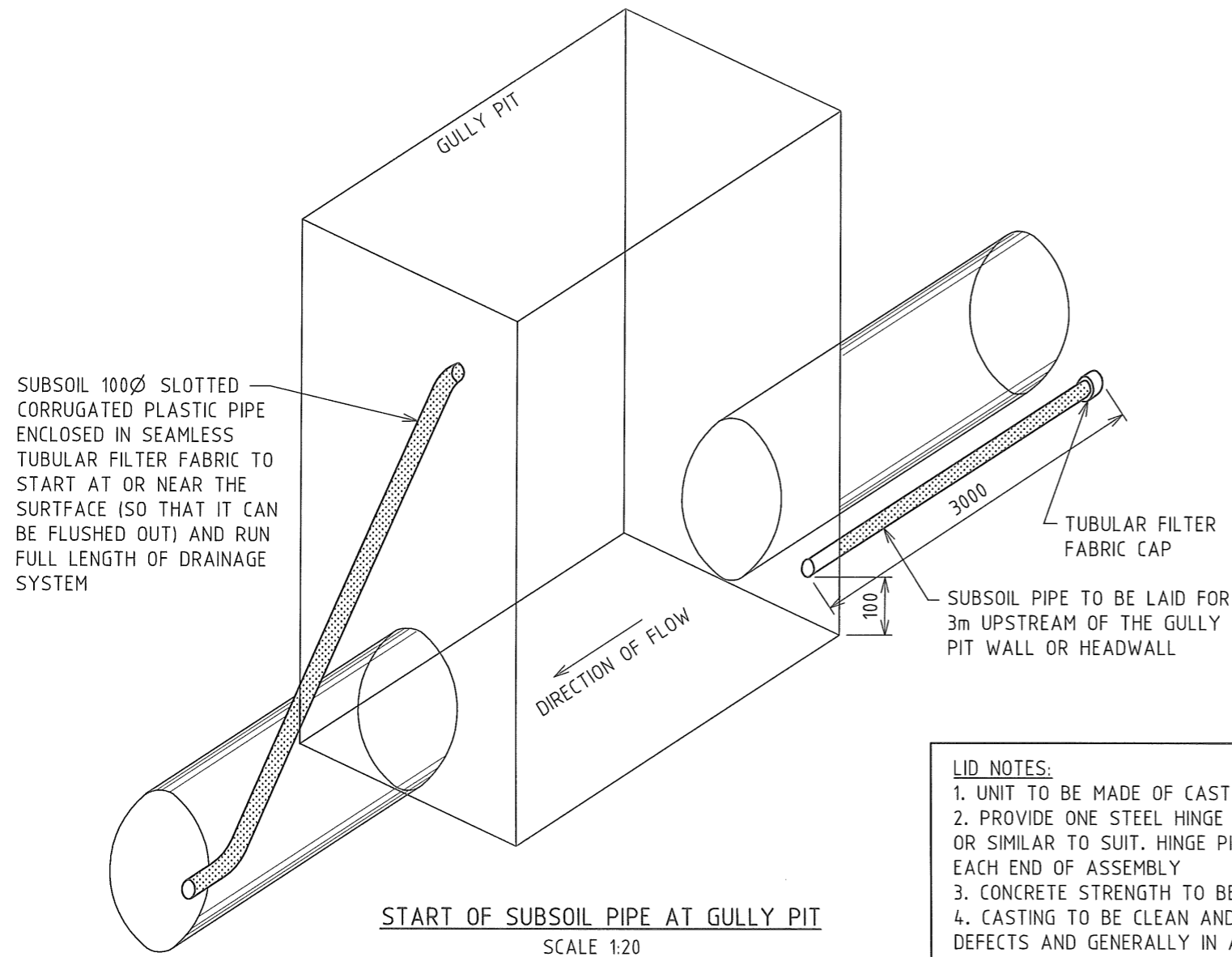
FLUSHING POINT AT START OF RUN
SCALE 1:20



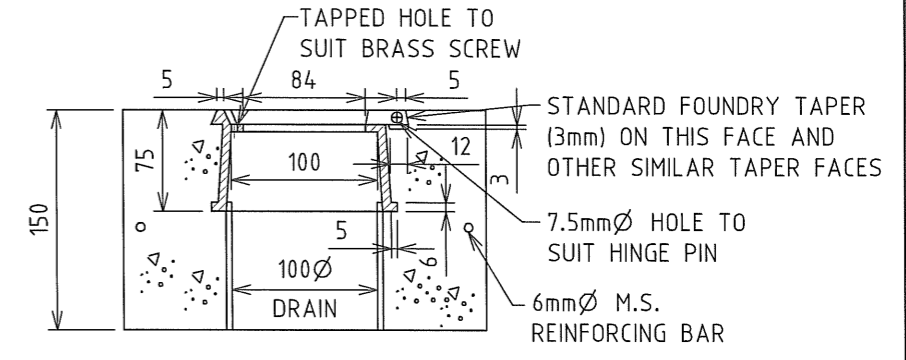
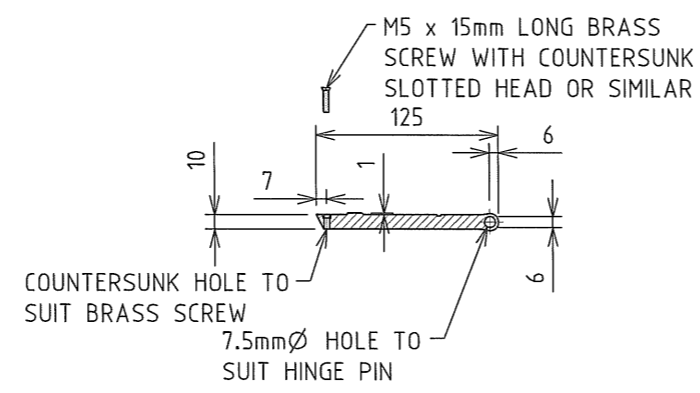
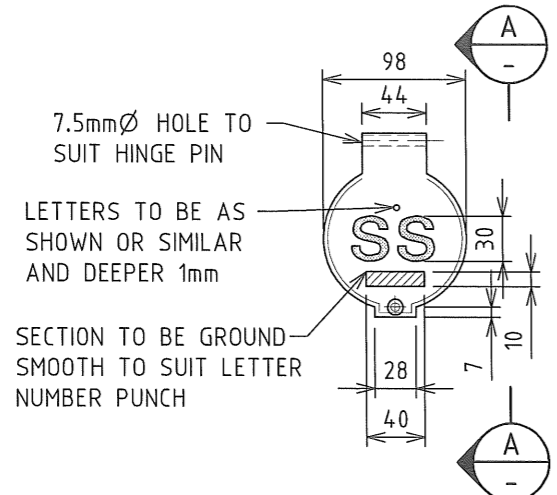
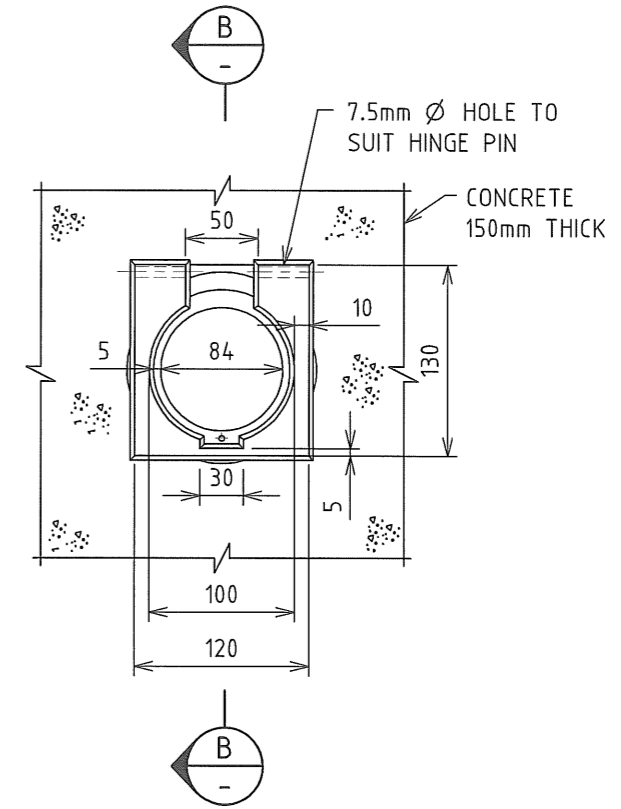
INTERMEDIATE FLUSHING POINT
SCALE 1:20
SUBSURFACE DRAIN FLUSHING
AND INSPECTION STRUCTURES

ALL DIMENSIONS ARE IN
MILLIMETRES UNLESS
NOTED OTHERWISE

<table border="1"> <tr> <td>1</td> <td>CONSTRUCTION</td> <td>11.06.13</td> <td>J.C.</td> </tr> <tr> <td>0</td> <td>PRELIMINARY - FOR REVIEW AND COMMENT ONLY</td> <td>14.12.12</td> <td>J.C.</td> </tr> <tr> <td>No.</td> <td>AMENDMENT DETAILS</td> <td>DATE</td> <td>INITIALS</td> </tr> </table>				1	CONSTRUCTION	11.06.13	J.C.	0	PRELIMINARY - FOR REVIEW AND COMMENT ONLY	14.12.12	J.C.	No.	AMENDMENT DETAILS	DATE	INITIALS	SCALE AS SHOWN	LIVEABLE CITY INFRASTRUCTURE MANAGEMENT SERVICES	APPROVED: SIGNED: INFRASTRUCTURE MANAGEMENT SERVICES MANAGER DATE: 11/6/13	THE CITY OF NEWCASTLE STORMWATER PIPE SUBSOIL DRAINAGE FOR ROAD PAVEMENTS	NCC PLAN No. A2003	SHEET No. 1 OF 2 SHEETS
1	CONSTRUCTION	11.06.13	J.C.																		
0	PRELIMINARY - FOR REVIEW AND COMMENT ONLY	14.12.12	J.C.																		
No.	AMENDMENT DETAILS	DATE	INITIALS																		
A3 ORIGINAL THIS SHEET WAS PREPARED IN COLOUR AND WILL BE INCOMPLETE IF COPIED				COORDINATE SYSTEM:	HEIGHT DATUM: AHD	REVIEWED: J.C.	AMENDMENT No.														



- LID NOTES:**
1. UNIT TO BE MADE OF CAST IRON
 2. PROVIDE ONE STEEL HINGE PIN 150 LONG x 6 THICK OR SIMILAR TO SUIT. HINGE PIN TO BE BENT OVER EACH END OF ASSEMBLY
 3. CONCRETE STRENGTH TO BE 20 Mpa AT 28 DAYS
 4. CASTING TO BE CLEAN AND FREE FROM HARMFUL DEFECTS AND GENERALLY IN ACCORDANCE WITH AS1830.2007



CLEANOUT STRUCTURES FOR 100mm SUBSURFACE DRAINS

ALL DIMENSIONS ARE IN MILLIMETRES UNLESS NOTED OTHERWISE

				SCALE		APPROVED: SIGNED: INFRASTRUCTURE MANAGEMENT SERVICES MANAGER DATE: 11/6/13	THE CITY OF NEWCASTLE STORMWATER PIPE SUBSOIL DRAINAGE FOR ROAD PAVEMENTS	NCC PLAN No.	SHEET No.
				AS SHOWN				REVIEWED: J.C.	A2003
1	CONSTRUCTION	11.06.13	J.C.					AMENDMENT No.	
0	PRELIMINARY - FOR REVIEW AND COMMENT ONLY	14.12.12	J.C.						
No.	AMENDMENT DETAILS	DATE	INITIALS						
A3 ORIGINAL THIS SHEET WAS PREPARED IN COLOUR AND WILL BE INCOMPLETE IF COPIED				COORDINATE SYSTEM:	HEIGHT DATUM: AHD				