

Joslin Street

Kotara Local Centre

City of Newcastle Council is revitalising Joslin Street Local Centre with a focus on improving connectivity for all by integrating the movement of pedestrians, cyclists, buses and cars.

It achieves better connectivity with the addition of a pathway from Rae Crescent across Joslin Street (via a pedestrian refuge) to the retail strip while accommodating bus stops. The southern bus stop is relocated to maintain adequate sight lines and mandatory No Stopping restriction on approach to the pedestrian refuge. The plan also formalises carpark spaces, making it clear where parking can occur, clear of driveways and ensuring good sight lines.

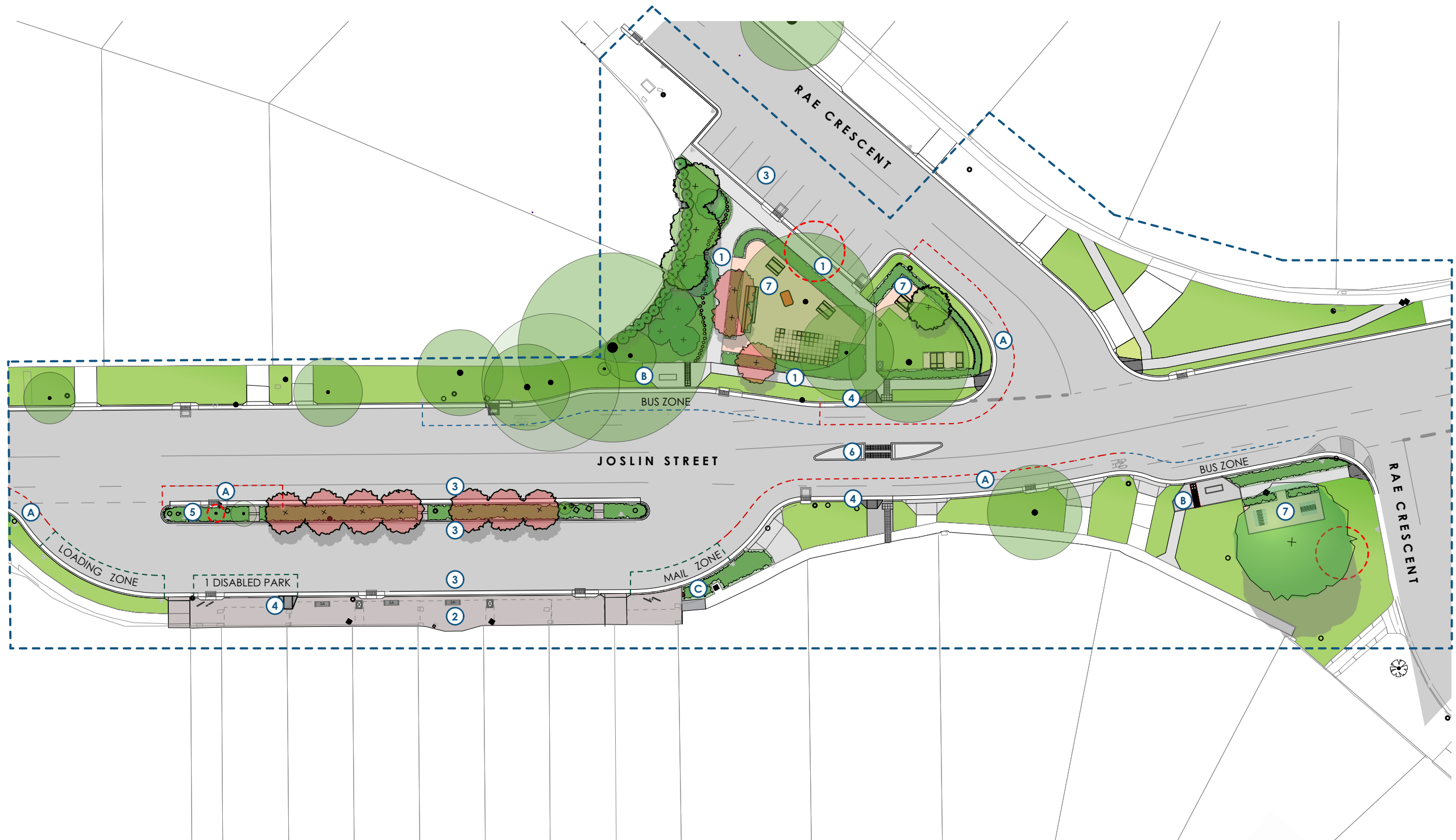
The design also takes advantage of the amalgamation of open space at the corner of Joslin Street and Rae Crescent by deleting the slip road. This allows for the addition of ten car spaces connecting to the new pathway and also creating a more usable open space area - a new park for the local community.

LEGEND

- ① Proposed Pedestrian Footpath
- ② Shopfront Pathway
- ③ Formalised Parking Spaces
- ④ New Pram Ramp
- ⑤ Retained Traffic Median
- ⑥ Pedestrian Refuge
- ⑦ Outdoor Seating

- Ⓐ No Stopping Zone
- Ⓑ New Bus Stop and Bus Zone
- Ⓒ Relocated Mail Zone and Post Box
- - - Indicates Extent of Works

- Existing Trees to be Retained
- Trees to be Removed
- ⊕ Proposed Trees
- ▭ Mass Planted Garden Beds
- ▭ Turf
- ▭ Permeable Asphalt Paving
- ▭ Deco granite
- ▭ Ashlar Paving Pattern



PLAN
1:500 @ A3

