

NOTES
 1. REFER TO DRAWING A2400 FOR NOTES AND SPECIFICATIONS

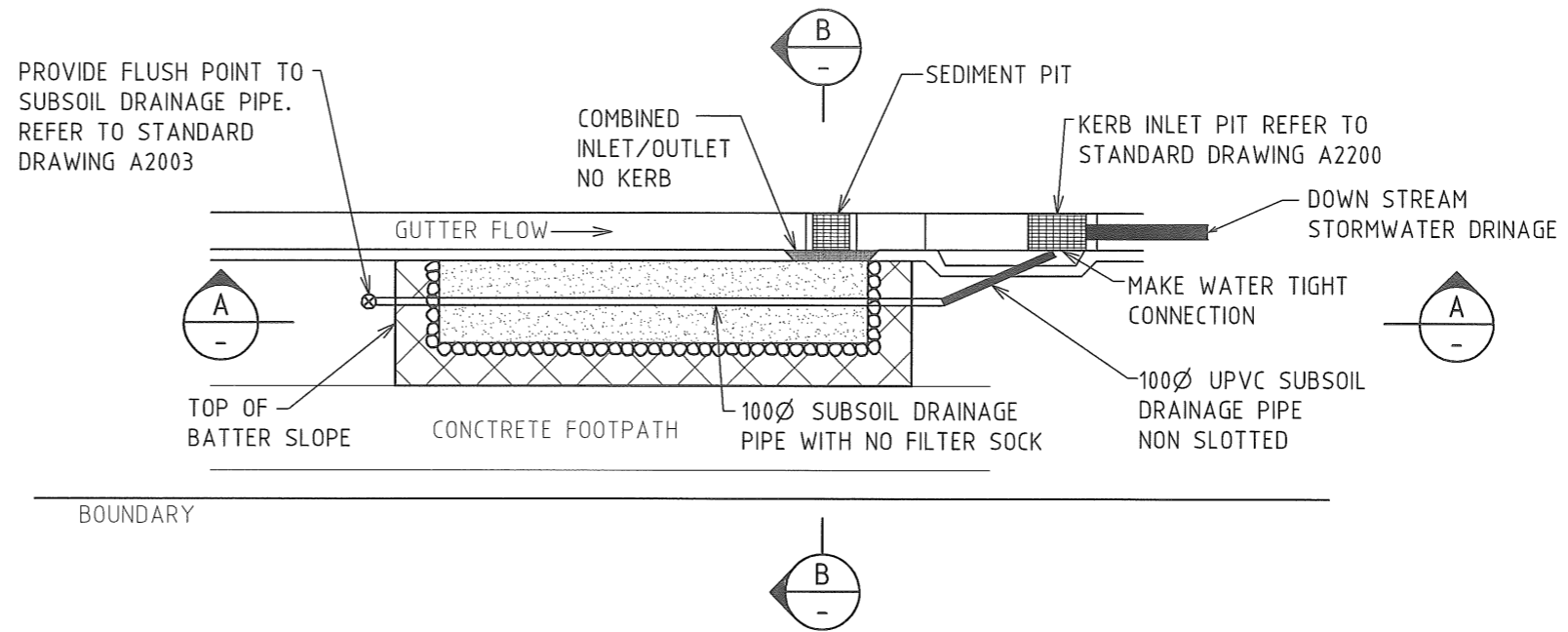
REFERENCES
 1. SYDNEY METROPOLITAN CATCHMENT MANAGEMENT AUTHORITY (TYPICAL DRAWINGS FOR WSUD)

ALL WSUD DEVICES AND ELEMENTS ARE TO BE DESIGNED IN ACCORDANCE WITH THE CITY OF NEWCASTLE TECHNICAL MANUAL FOR STORMWATER AND WATER EFFICIENCY FOR DEVELOPMENT

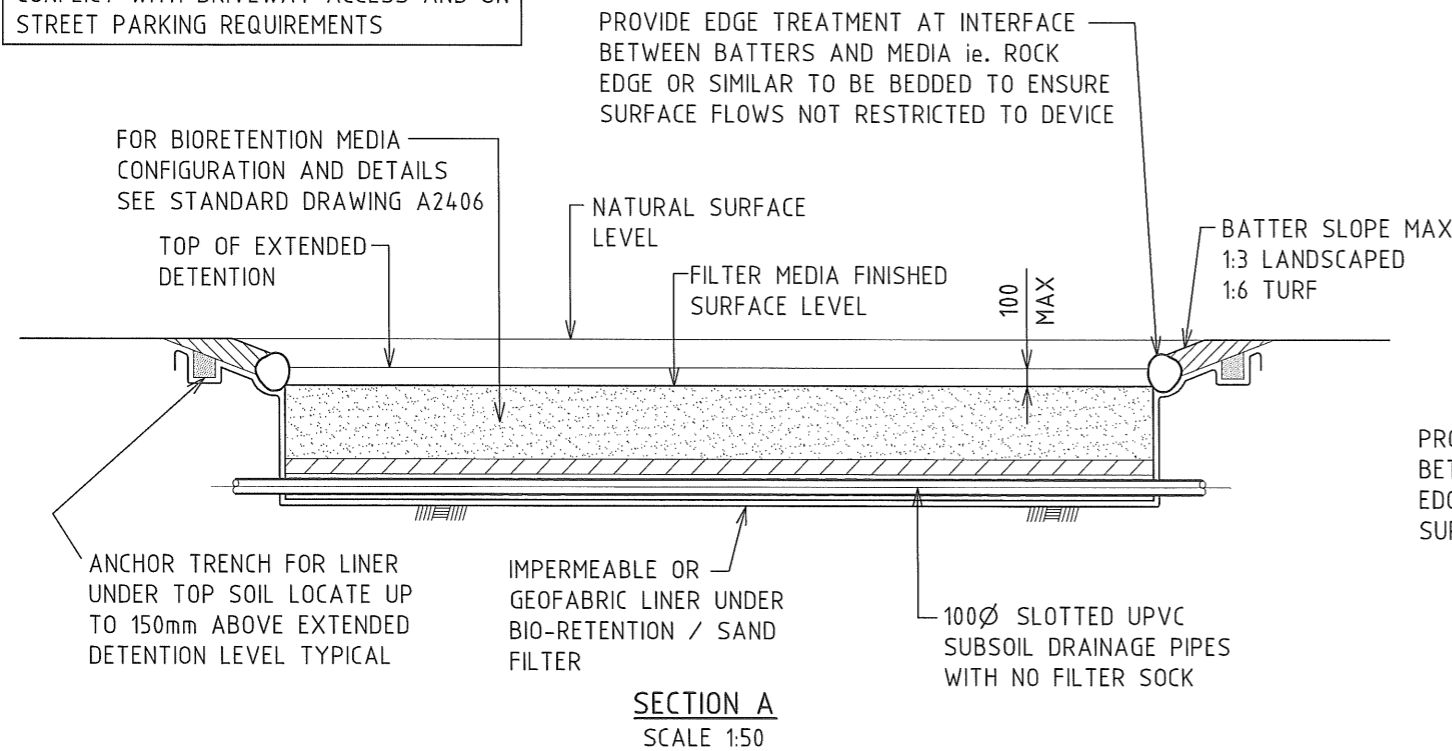
BIORETENTION DEVICES ARE TO BE DESIGNED SO THAT VELOCITY FOR MAJOR STORM EVENT IS LESS THEN 2m/s. FOR A 1 IN 6 MONTH EVENT VELOCITY IS TO BE NO GREATER THEN 0.5m/s

ALL BIOFILTRATION DEVICES TO BE VEGETATED SEE APPENDIX 4 OF THE CITY OF NEWCASTLE TECHNICAL MANUAL FOR STORMWATER AND WATER EFFICIENCY FOR DEVELOPMENT

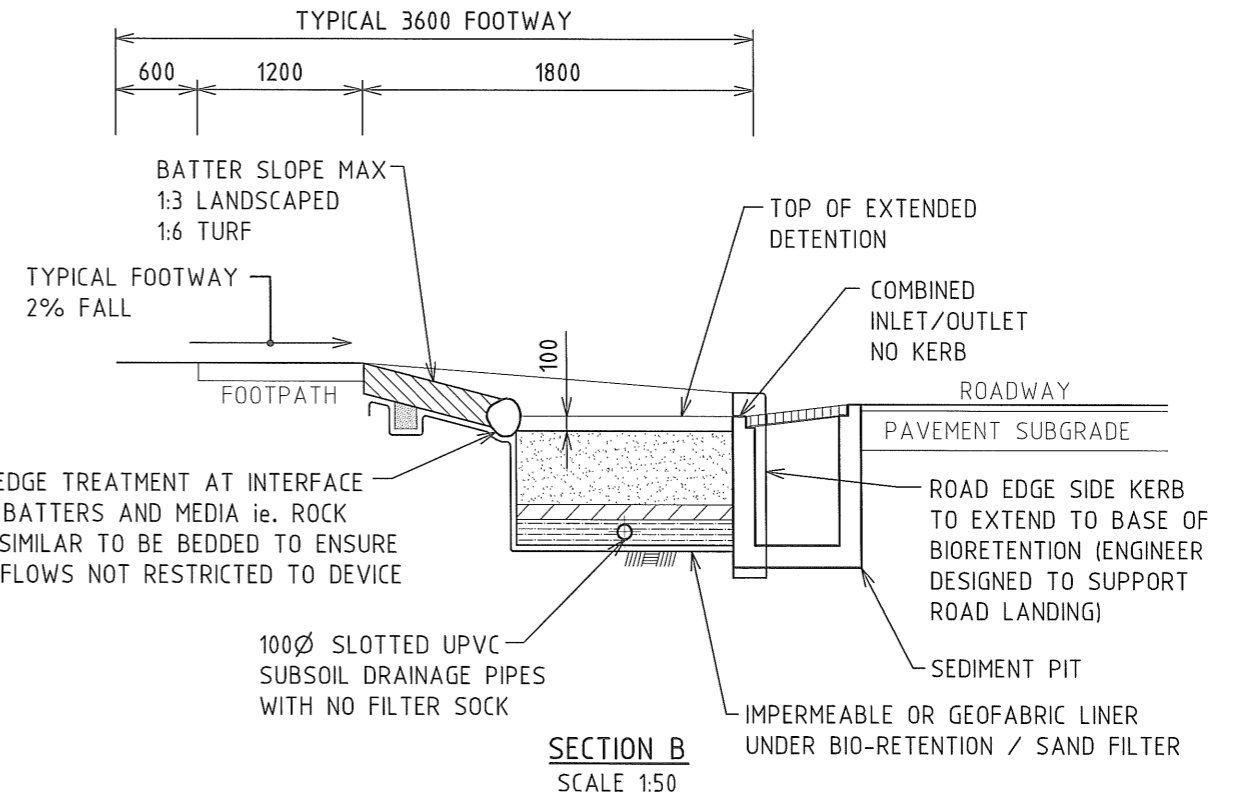
LOCATION OF BIORETENTION WITHIN STREET SCAPE IS TO TAKE INTO CONSIDERATION PEDESTRIAN ACTIVITY AND TO MINIMISE CONFLICT WITH DRIVEWAY ACCESS AND ON STREET PARKING REQUIREMENTS



BIORETENTION SYSTEM FOR FOOTPATH PLAN
 SCALE 1:100



SECTION A
 SCALE 1:50



SECTION B
 SCALE 1:50

ALL DIMENSIONS ARE IN MILLIMETRES UNLESS NOTED OTHERWISE

No.	AMENDMENT DETAILS	DATE	INITIALS
1	CONSTRUCTION	11.06.13	J.C.
0	PRELIMINARY - FOR REVIEW AND COMMENT ONLY	11.01.13	J.C.

SCALE	AS SHOWN
COORDINATE SYSTEM:	HEIGHT DATUM: AHD

LIVEABLE CITY
INFRASTRUCTURE MANAGEMENT SERVICES

REVIEWED: J.C.

APPROVED:

SIGNED: *[Signature]*
 INFRASTRUCTURE MANAGEMENT SERVICES MANAGER

DATE: 11/6/13

THE CITY OF NEWCASTLE

WSUD BIORETENTION SYSTEM - FOOTPATH

NCC PLAN No.	A2403	SHEET No.	1 OF 1 SHEETS
AMENDMENT No.			

A3 ORIGINAL THIS SHEET WAS PREPARED IN COLOUR AND WILL BE INCOMPLETE IF COPIED