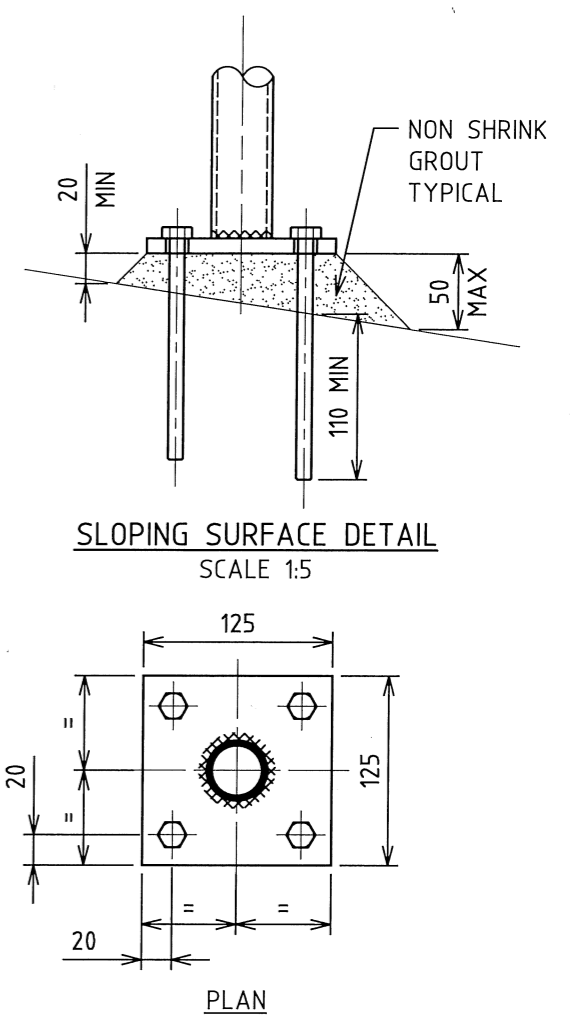
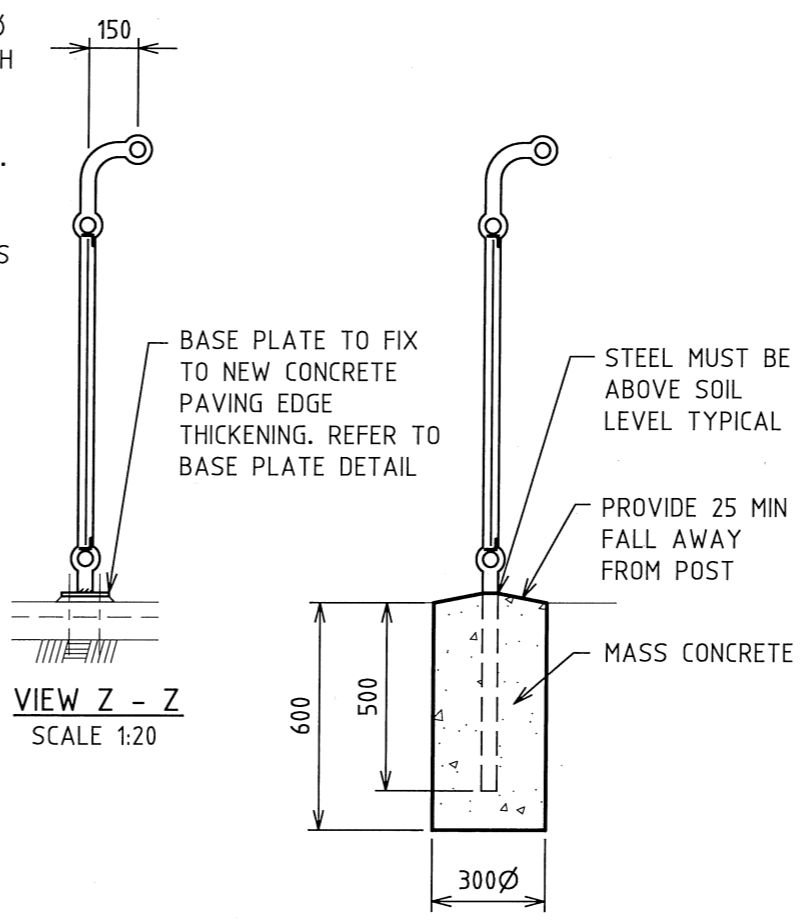
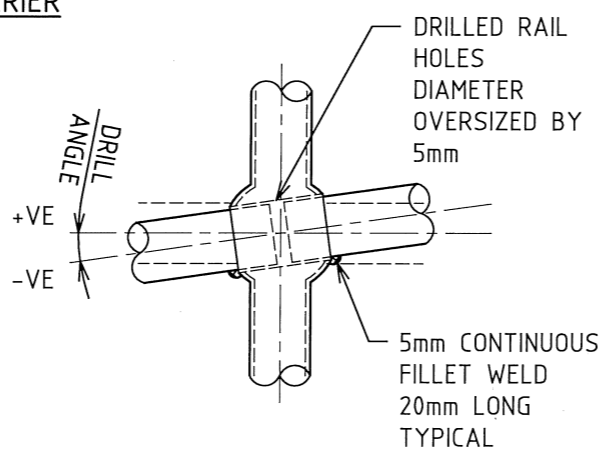


ELEVATION
CYCLEWAY FENCE - FULL BARRIER
SCALE 1:20



- NOTES**
1. ALL STEEL WORK TO BE HOT DIP GALVANIZING: FERROUS OPEN SECTIONS TO AS4791 (600g/m2 MIN), AFTER FABRICATION.
 2. NOT TO BE USED WITHIN 100m OF SURF ZONE
 3. MINIMUM LENGTH OF RAILS TO BE TWO SPANS LONG AND TO BE JOINED AT POST LOCATIONS WHERE POSSIBLE (REFER TO DETAIL)
 4. ALL SHOP WELDS TO BE 5 THICK CONTINUOUS FILLET WELDS TO AS1554.1 UNLESS NOTED OTHERWISE
 5. SITE WELDS SHALL NOT BE USED EXCEPT FOR CONNECTION OF RAILS TO POST. PROTECT WELD AREAS WITH TWO COATS OF GALMET.
 6. ALL CONCRETE TO BE GRADE N25
 7. POSTS INSTALLED IN EXISTING BRIDGE / CULVERT CONCRETE HEADWALL TO BE GROUTED INTO 90Ø HOLE WITH 1:3 CEMENT MORTAR BY VOLUME AFTER THEY HAVE BEEN CAREFULLY ALIGNED
 8. ANY GALVANIZED TUBULAR HANDRAILS TO BE USED ONLY IN SITUATIONS CLEAR OF LONGITUDINAL VEHICLE IMPACT SO AS NOT TO BE POTENTIAL SPEARING HAZARD TO MOTORISTS
 9. THESE FENCES ARE INTENDED AS A PEDESTRIAN BARRIER AND ARE NOT TO BE USED IN SITUATIONS WHERE MOTOR VEHICLES REQUIRE RESTRAINT
 10. DIMENSIONS IN MILLIMETERS UNLESS NOTIFIED OTHERWISE



POST TYPE	RAIL GRADES	DRILL ANGLE
1	0° TO +/-4°	0°
2	+8° TO +12°	+8°
3	-8° TO -12°	-8°

NOTE: 0° IS HORIZONTAL
POST TO RAIL CONNECTION
SCALE 1:5

